

Recombinant Human SOD1 protein(71-140 aa), C-His-tagged

Cat. No. SOD1-2495H Lot. No. (See product label)

SPECIFICATION

Product Overview	Recombinant Human SOD1 protein(P00441)(71-140 aa), fused with C-terminal His tag, was expressed in E. coli.
Species	Human
Source	E.coli
ProteinLength	71-140 aa
Form	0.15 M Phosphate buffered saline
Storage	Shipped on dry ice. Avoid repeated freeze-thaw cycles. Upon receipt, 2 days when stored at 2 to 8 °C after thawing. Up to 12 months when aliquoted and stored at -20 to -80°C.
Reconstitution	It is recommended that sterile water be added to the vial to prepare a stock solution of 0.2 ug/ul. Centrifuge the vial at 4°C before opening to recover the entire contents.
AA Sequence	KHGGPKDEERHVGDLGNVTADKDGVADVSIEDSVISLSGDHCCIIGRTLTVVHEKADDL GKGGNEESTKTGN

GENE INFORMATION

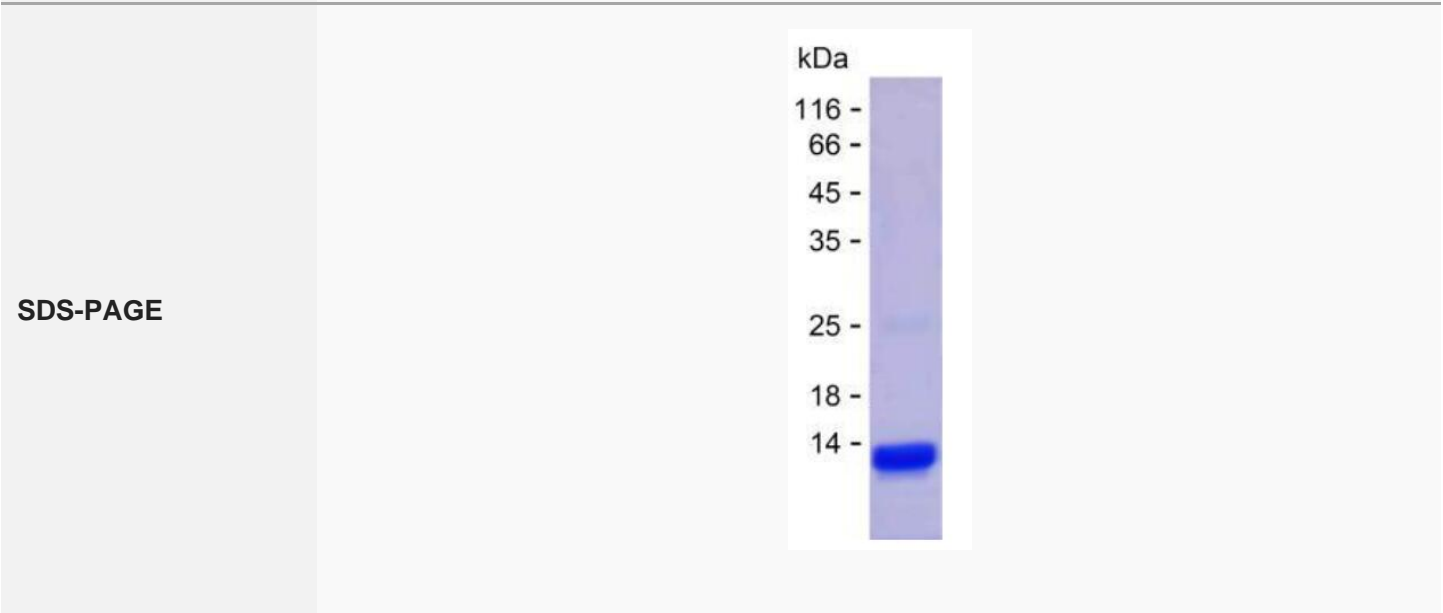
Gene Name SOD1 superoxide dismutase 1, soluble [Homo sapiens]

 Tel: 1-631-559-9269 1-516-512-3133

 Email: info@creative-biomart.com  Fax: 1-631-938-8127

 45-1 Ramsey Road, Shirley, NY 11967, USA

Official Symbol	SOD1
Synonyms	SOD1; superoxide dismutase 1, soluble; ALS, ALS1, amyotrophic lateral sclerosis 1 (adult); superoxide dismutase [Cu-Zn]; IPOA; SOD, soluble; indophenoxidase A; Cu/Zn superoxide dismutase; superoxide dismutase, cystolic; ALS; SOD; ALS1; hSod1; homodimer;
Gene ID	6647
mRNA Refseq	NM_000454
Protein Refseq	NP_000445
MIM	147450
UniProt ID	P00441



Tel: 1-631-559-9269 1-516-512-3133

Email: info@creative-biomart.com Fax: 1-631-938-8127

45-1 Ramsey Road, Shirley, NY 11967, USA