

Active Recombinant Human Superoxide Dismutase 1, Soluble, His-tagged

Cat. No. SOD1-326H Lot. No. (See product label)

SPECIFICATION

Species	Human
Source	E.coli
Description	<p>Cu/Zn Superoxide Dismutase (Cu/Zn SOD) catalyzes the dismutation of superoxide radicals to molecular oxygen. It has been implicated in cellular aging due to its reduced activity in aging cells. Cu/Zn SOD plays a protective role in the pathogenesis of selective neuronal injury after brief ischemia and reduces the degree of necrotic and DNA fragmented neuronal death following global ischemia. Mutant forms of Cu/Zn SOD have been linked to neurodegenerative diseases such as amyotrophic lateral sclerosis.</p>
Usage	For in vitro use only.
Form	Liquid. Supplied in 50 mM sodium citrate buffer pH 5.5, 1 mM DTT, 200 μ M ZnSO ₄ , and 200 μ M CuSO ₄ .
Activity	> 2.000 units/mg (One unit is defined as the amount of enzyme that will double the rate of autoxidation of 5, 6, 6a, 11b-tetrahydro- 3, 9,10-trihydroxybenzo-[c]- fluorene per minute at 37°C, pH 8.8).
Purity	> 90% by SDS-PAGE.
Storage	Quality guaranteed for 12 months, Store at -80°C. Avoid freeze / thaw cycles.

 Tel: 1-631-559-9269 1-516-512-3133

 Email: info@creative-biomart.com  Fax: 1-631-938-8127

 45-1 Ramsey Road, Shirley, NY 11967, USA

GENE INFORMATION

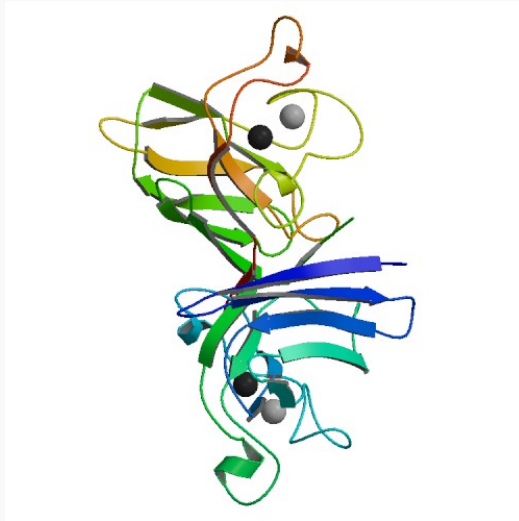
Gene Name	SOD1 superoxide dismutase 1, soluble [Homo sapiens]
Synonyms	SOD1; superoxide dismutase 1, soluble; ALS; SOD; ALS1; IPOA; homodimer; SOD, soluble; indophenoloxidase A; Cu/Zn superoxide dismutase; superoxide dismutase, cystolic; EC 1.15.1.1; Superoxide dismutase [Cu-Zn]
Gene ID	6647
mRNA Refseq	NM_000454
Protein Refseq	NP_000445
MIM	147450
UniProt ID	P00441
Chromosome Location	21q22.11
Pathway	Amyotrophic lateral sclerosis (ALS); Huntington"s disease; Prion diseases; Hemostasis
Function	antioxidant activity; chaperone binding; copper ion binding; metal ion binding; protein homodimerization activity; protein phosphatase 2B binding; superoxide dismutase activity; zinc ion binding

 Tel: 1-631-559-9269 1-516-512-3133

 Email: info@creative-biomart.com  Fax: 1-631-938-8127

 45-1 Ramsey Road, Shirley, NY 11967, USA

PDB rendering based
on 1azv.



 Tel: 1-631-559-9269 1-516-512-3133

 Email: info@creative-biomart.com  Fax: 1-631-938-8127

 45-1 Ramsey Road, Shirley, NY 11967, USA