

## Recombinant Human SOD1 protein, His-tagged

Cat. No. SOD1-3544H Lot. No. (See product label)

### SPECIFICATION

<b>Product Overview</b>	Recombinant Human SOD1 protein(P00441)(169aa), fused with N-terminal His tag, was expressed in E. coli.
<b>Species</b>	Human
<b>Source</b>	E.coli
<b>Protein Length</b>	169aa(including fusion tag)
<b>Tag</b>	N-His
<b>Form</b>	20mM Tris.Cl, 50mM NaCl, 20% Glycerol, pH8.0.
<b>Molecular Mass</b>	17.8kDa(including fusion tag)
<b>Storage</b>	Store at -80°C and avoid repeated freeze-thaw cycles.
<b>Reconstitution</b>	It is recommended that sterile water be added to the vial to prepare a stock solution of 0.2 ug/ul. Centrifuge the vial at 4°C before opening to recover the entire contents.

### GENE INFORMATION

<b>Gene Name</b>	SOD1 superoxide dismutase 1, soluble [ Homo sapiens ]
<b>Official Symbol</b>	SOD1

 Tel: 1-631-559-9269 1-516-512-3133

 Email: [info@creative-biomart.com](mailto:info@creative-biomart.com)  Fax: 1-631-938-8127

 45-1 Ramsey Road, Shirley, NY 11967, USA

**Synonyms** SOD1; superoxide dismutase 1, soluble; ALS, ALS1, amyotrophic lateral sclerosis 1 (adult); superoxide dismutase [Cu-Zn]; IPOA; SOD, soluble; indophenoxidase A; Cu/Zn superoxide dismutase; superoxide dismutase, cystolic; ALS; SOD; ALS1; hSod1; homodimer;

**Gene ID** 6647

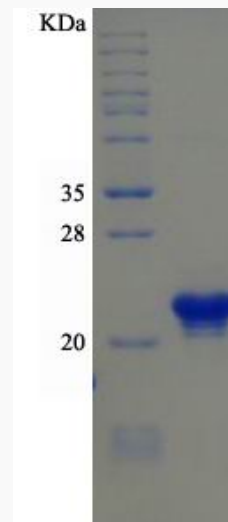
**mRNA Refseq** NM\_000454

**Protein Refseq** NP\_000445

**MIM** 147450

**UniProt ID** P00441

**SDS-PAGE**



 Tel: 1-631-559-9269 1-516-512-3133

 Email: [info@creative-biomart.com](mailto:info@creative-biomart.com)  Fax: 1-631-938-8127

 45-1 Ramsey Road, Shirley, NY 11967, USA