

## Recombinant Dog SOD1 protein, His-tagged

Cat. No. SOD1-4563D Lot. No. (See product label)

### SPECIFICATION

<b>Product Overview</b>	Recombinant Dog SOD1 protein(Q8WNN6)(1-153 aa), fused with C-terminal His tag, was expressed in E.coli.
<b>Species</b>	Dog
<b>Source</b>	E.coli
<b>ProteinLength</b>	1-153 aa
<b>Form</b>	For liquid formulations, the standard storage buffer consists of a Tris or PBS based solution supplemented with 5-50% glycerol. When provided as lyophilized powder, the product undergoes freeze-drying from a Tris- or PBS-based formulation containing 6% trehalose, adjusted to pH 8.0 prior to the lyophilization process.
<b>Molecular Mass</b>	22.8 kDa
<b>AASequence</b>	MEMKAVCVLKGQGPVEGTIHFVQKGS GPVVVSGTITGLTEGEHGFHVHQFEDSTQ GCTSAGPHFNPLSKKHGGPKDQERHVGDLGNVTAGKDGVAIVSIEDSLIALSGDYSII GRTMVVHEKRDDLKGDNEESTQTGNAGSRLACGVIGIAQ
<b>Purity</b>	Greater than 95% as determined by SDS-PAGE.
<b>Storage</b>	Store at -20°C/-80°C upon receipt, aliquoting is necessary for mutiple use. Avoid repeated freeze-thaw cycles.

 Tel: 1-631-559-9269 1-516-512-3133

 Email: [info@creative-biomart.com](mailto:info@creative-biomart.com)  Fax: 1-631-938-8127

 45-1 Ramsey Road, Shirley, NY 11967, USA

**Reconstitution** Please reconstitute protein in deionized sterile water to a concentration of 0.1-1.0 mg/mL. Aliquot for long-term storage at -80°C.

## GENE INFORMATION

**Gene Name** SOD1 superoxide dismutase 1, soluble [ *Canis lupus familiaris* ]

**Official Symbol** SOD1

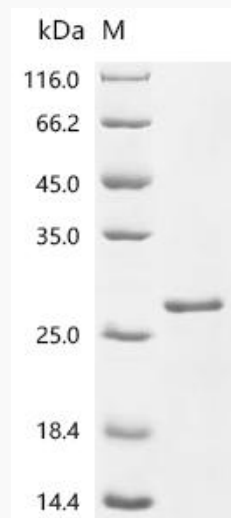
**Synonyms** SOD1; superoxide dismutase 1, soluble; superoxide dismutase [Cu-Zn]; Cu/Zn superoxide dismutase; superoxide dismutase 1, soluble (amyotrophic lateral sclerosis 1 (adult));

**Gene ID** 403559

**mRNA Refseq** NM\_001003035

**Protein Refseq** NP\_001003035

## SDS-PAGE



 Tel: 1-631-559-9269 1-516-512-3133

 Email: [info@creative-biomart.com](mailto:info@creative-biomart.com)  Fax: 1-631-938-8127

 45-1 Ramsey Road, Shirley, NY 11967, USA