

Recombinant Human SOD1 Protein (Met1-Gln154), N-His tagged

Cat. No. SOD1-6332H Lot. No. (See product label)

SPECIFICATION

Product Overview	Recombinant human SOD1 (Met1-Gln154) fused with the N-terminal His tag was expressed in E. coli.
Species	Human
Source	E.coli
ProteinLength	Met1-Gln154
Form	Lyophilized powder/frozen liquid
Molecular Mass	16.94 kDa
Purity	> 90 % as determined by SDS-PAGE
Notes	For research use only.
Storage	Use a manual defrost freezer and avoid repeated freeze thaw cycles. Store at 2 to 8 centigrade for one week. Store at -20 to -80 centigrade for twelve months from the date of receipt.
Storage Buffer	Supplied as solution form in PBS or lyophilized from PBS.
Reconstitution	Reconstitute in sterile water for a stock solution.

 Tel: 1-631-559-9269 1-516-512-3133

 Email: info@creative-biomart.com  Fax: 1-631-938-8127

 45-1 Ramsey Road, Shirley, NY 11967, USA

Shipping They are shipped out with dry ice/blue ice unless customers require otherwise.

GENE INFORMATION

Gene Name SOD1 superoxide dismutase 1, soluble [Homo sapiens (human)]

Official Symbol SOD1

Synonyms SOD1; superoxide dismutase 1, soluble; ALS, ALS1, amyotrophic lateral sclerosis 1 (adult); superoxide dismutase [Cu-Zn]; IPOA; SOD, soluble; indophenoloxidase A; Cu/Zn superoxide dismutase; superoxide dismutase, cystolic; ALS; SOD; ALS1; hSod1; homodimer;

Gene ID 6647

mRNA Refseq NM_000454

Protein Refseq NP_000445

MIM 147450

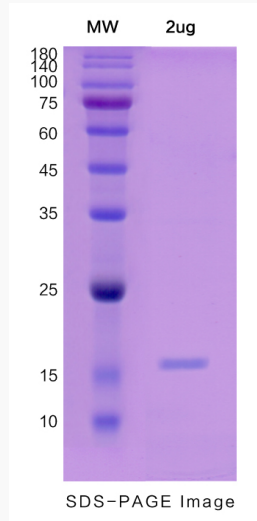
UniProt ID P00441

 Tel: 1-631-559-9269 1-516-512-3133

 Email: info@creative-biomart.com  Fax: 1-631-938-8127

 45-1 Ramsey Road, Shirley, NY 11967, USA

SDS-PAGE



 Tel: 1-631-559-9269 1-516-512-3133

 Email: info@creative-biomart.com  Fax: 1-631-938-8127

 45-1 Ramsey Road, Shirley, NY 11967, USA