

Recombinant Human SOD1 Protein


Cat. No. SOD1-67H **Lot. No.** (See product label)

SPECIFICATION

Product Overview	Recombinant human SOD1 protein without tag was expressed in Sf9 cells.
Species	Human
Source	Insect Cells
Description	The protein encoded by this gene binds copper and zinc ions and is one of two isozymes responsible for destroying free superoxide radicals in the body. The encoded isozyme is a soluble cytoplasmic protein, acting as a homodimer to convert naturally-occurring but harmful superoxide radicals to molecular oxygen and hydrogen peroxide. The other isozyme is a mitochondrial protein. Mutations in this gene have been implicated as causes of familial amyotrophic lateral sclerosis. Rare transcript variants have been reported for this gene.
Molecular Mass	160 kDa
Purity	>95% estimated by SDS-PAGE
Applications	WB, gel staining
Stability	≥ 1 year
Storage	Store it at -80 centigrade
Storage Buffer	50 µl of 50 mM HEPES buffer, pH 7.4, with 20% glycerol

 Tel: 1-631-559-9269 1-516-512-3133

 Email: info@creative-biomart.com  Fax: 1-631-938-8127

 45-1 Ramsey Road, Shirley, NY 11967, USA

GENE INFORMATION

Gene Name SOD1 superoxide dismutase 1 [Homo sapiens (human)]

Official Symbol SOD1

Synonyms SOD1; superoxide dismutase 1; ALS; SOD; ALS1; IPOA; STAHP; hSod1; HEL-S-44; homodimer; superoxide dismutase [Cu-Zn]; Cu/Zn superoxide dismutase; SOD, soluble; epididymis secretory protein Li 44; indophenoloxidase A; superoxide dismutase 1, soluble; superoxide dismutase, cystolic

Gene ID 6647

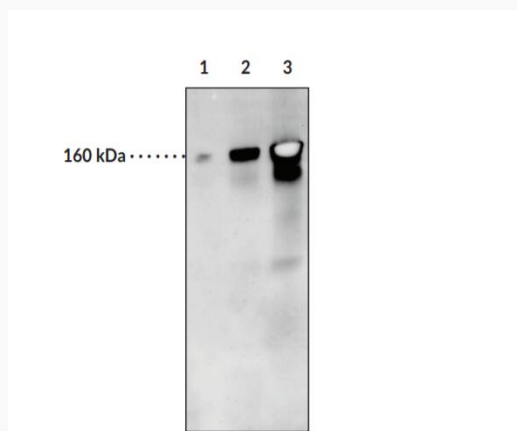
mRNA Refseq NM_000454

Protein Refseq NP_000445

MIM 147450

UniProt ID P00441

SDS-PAGE Analysis of SOD1



 Tel: 1-631-559-9269 1-516-512-3133

 Email: info@creative-biomart.com  Fax: 1-631-938-8127

 45-1 Ramsey Road, Shirley, NY 11967, USA



Lane 1: nNOS Standard (2 ng); Lane 2: nNOS Standard (20 ng); Lane 3: nNOS Standard (100 ng). Samples probed with nNOS Polyclonal Antibody.

 Tel: 1-631-559-9269 1-516-512-3133

 Email: info@creative-biomart.com  Fax: 1-631-938-8127

 45-1 Ramsey Road, Shirley, NY 11967, USA