

## Recombinant Cynomolgus SOD1 Protein, His-tagged

Cat. No. SOD1-956C Lot. No. (See product label)

### SPECIFICATION

<b>Product Overview</b>	Recombinant Cynomolgus SOD1 protein with a His-tag was expressed in E. coli
<b>Species</b>	Cynomolgus
<b>Source</b>	E.coli
<b>Description</b>	Destroys radicals which are normally produced within the cells and which are toxic to biological systems.
<b>Molecular Mass</b>	The protein has a calculated MW of 19 kDa.
<b>AA Sequence</b>	MGSSHHHHHSSGLVPRGSHMAMKAVCVLKGDSPVQGTINFEQKESNGPVK VWG SITGLTEGLHGFHVHQFGDNTQGCTSAGPHFNPLSRQHGGPKDEERHVGDLGNVT AGKDGVAKVSEFEDSVISLSGDHSIIGRTL VVHEKADDLGKGGNEESKKTGNAGGRLA CGVIGIAQH HHHHHH
<b>Endotoxin</b>	<1 EU/μg
<b>Purity</b>	>90% by SDS-PAGE
<b>Storage</b>	Store it under sterile conditions at -20 to -80 centigrade. It is recommended that the protein be aliquoted for optimal storage. Avoid repeated freeze-thaw cycles.
<b>Concentration</b>	0.28 mg/mL

 Tel: 1-631-559-9269 1-516-512-3133

 Email: [info@creative-biomart.com](mailto:info@creative-biomart.com)  Fax: 1-631-938-8127

 45-1 Ramsey Road, Shirley, NY 11967, USA

**Storage Buffer**                      PBS pH7.4

## GENE INFORMATION

**Gene Name**                              SOD1 superoxide dismutase 1, soluble [ *Macaca mulatta* (Rhesus monkey) ]

**Official Symbol**                        SOD1

**Synonyms**                                SOD1; superoxide dismutase 1, soluble; superoxide dismutase [Cu-Zn]; Cu,Zn-superoxide dismutase; superoxide dismutase 1, soluble (amyotrophic lateral sclerosis 1 (adult));

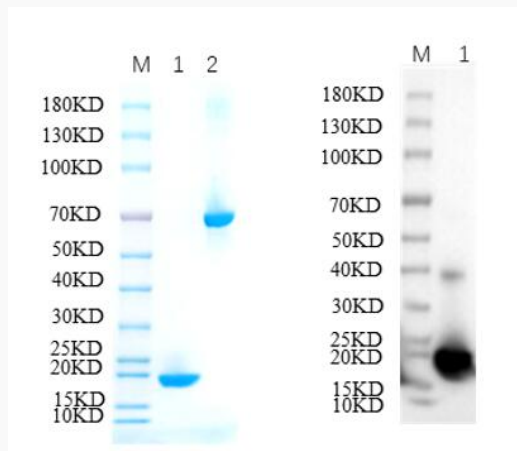
**Gene ID**                                    574096

**mRNA Refseq**                            NM\_001032804

**Protein Refseq**                           NP\_001027976

**UniProt ID**                                Q8HXQ1

**SDS-PAGE:**



 Tel: 1-631-559-9269    1-516-512-3133

 Email: [info@creative-biomart.com](mailto:info@creative-biomart.com)     Fax: 1-631-938-8127

 45-1 Ramsey Road, Shirley, NY 11967, USA



Reducing 12% SDS-PAGE and WB analysis profile of purified SOD

1. SOD
2. BSA

 Tel: 1-631-559-9269 1-516-512-3133

 Email: [info@creative-biomart.com](mailto:info@creative-biomart.com)  Fax: 1-631-938-8127

 45-1 Ramsey Road, Shirley, NY 11967, USA