

Recombinant Cynomolgus SOD1 Protein, His-tagged

Cat. No. SOD1-957C Lot. No. (See product label)

SPECIFICATION

Product Overview	Recombinant Cynomolgus SOD1 protein with a His-tag was expressed in HEK293
Species	Cynomolgus
Source	HEK293
Description	Destroys radicals which are normally produced within the cells and which are toxic to biological systems.
Molecular Mass	The protein has a calculated MW of 16.7 kDa.
AA Sequence	AMKAVCVLKGDSPVQGTINFEQKESNGPVKVVWGSITGLTEGLHGFHVHQFGDNTQ GCTSAGPHFNPLSRQHGGPKDEERHVGDLGNVTAGKDGVAKVSFEDSVISLSGDH SIIGRTLTVHEKADDLKGKGGNEESKKTGNAGGRLACGVIGIAQHSHHHHH
Endotoxin	<1 EU/μg
Purity	>90% by SDS-PAGE
Storage	Store it under sterile conditions at -20 to -80 centigrade. It is recommended that the protein be aliquoted for optimal storage. Avoid repeated freeze-thaw cycles.
Concentration	1.24 mg/mL
Storage Buffer	PBS, pH 7.4

 Tel: 1-631-559-9269 1-516-512-3133

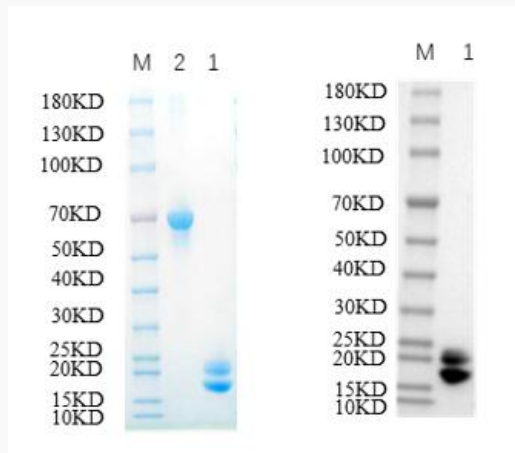
 Email: info@creative-biomart.com  Fax: 1-631-938-8127

 45-1 Ramsey Road, Shirley, NY 11967, USA

GENE INFORMATION

Gene Name	SOD1 superoxide dismutase 1, soluble [<i>Macaca mulatta</i> (Rhesus monkey)]
Official Symbol	SOD1
Synonyms	SOD1; superoxide dismutase 1, soluble; superoxide dismutase [Cu-Zn]; Cu,Zn-superoxide dismutase; superoxide dismutase 1, soluble (amyotrophic lateral sclerosis 1 (adult));
Gene ID	574096
mRNA Refseq	NM_001032804
Protein Refseq	NP_001027976
UniProt ID	Q8HXQ1

SDS-PAGE:



Reducing 12% SDS-PAGE and WB analysis profile of purified SOD

Tel: 1-631-559-9269 1-516-512-3133

Email: info@creative-biomart.com Fax: 1-631-938-8127

45-1 Ramsey Road, Shirley, NY 11967, USA



Lane 1. SOD

Lane 2. BSA

 Tel: 1-631-559-9269 1-516-512-3133

 Email: info@creative-biomart.com  Fax: 1-631-938-8127

 45-1 Ramsey Road, Shirley, NY 11967, USA