

## Active Recombinant Human Manganese Superoxide Dismutase/ SOD2 / MnSOD protein, Tag Free

Cat. No. SOD2-1181H Lot. No. (See product label)

### SPECIFICATION

<b>Product Overview</b>	Recombinant Human SOD2 protein(P04179-1)(Lys25-Lys222) was expressed in E. coli.
<b>Species</b>	Human
<b>Source</b>	E.coli
<b>ProteinLength</b>	Lys25-Lys222
<b>Tag</b>	Non
<b>Form</b>	Lyophilized from sterile PBS, pH 7.5Please contact us for any concerns or special requirements. Normally 5 % - 8 % trehalose, mannitol and 0.01% Tween80 are added as protectants before lyophilization.
<b>Bio-activity</b>	≥10000 U/mg
<b>Molecular Mass</b>	22.3kDa
<b>Endotoxin</b>	≤5EU/mg
<b>Purity</b>	≥95%(SDS-PAGE)
<b>Storage</b>	Samples are stable for up to twelve months from date of receipt at -20°C to -80°C

 Tel: 1-631-559-9269 1-516-512-3133

 Email: [info@creative-biomart.com](mailto:info@creative-biomart.com)  Fax: 1-631-938-8127

 45-1 Ramsey Road, Shirley, NY 11967, USA

Store it under sterile conditions at -20°C to -80°C. It is recommended that the protein be aliquoted for optimal storage. Avoid repeated freeze-thaw cycles.

**Reconstitution**

It is recommended that sterile water be added to the vial to prepare a stock solution of 0.2 ug/ul. Centrifuge the vial at 4°C before opening to recover the entire contents.

## GENE INFORMATION

**Gene Name** [SOD2 superoxide dismutase 2, mitochondrial \[ Homo sapiens \]](#)

**Official Symbol** [SOD2](#)

**Synonyms**

SOD2; superoxide dismutase 2, mitochondrial; superoxide dismutase [Mn], mitochondrial; indophenoloxidase B; Mn superoxide dismutase; mangano-superoxide dismutase; manganese-containing superoxide dismutase; IPOB; MNSOD; MVCD6;

**Gene ID** [6648](#)

**mRNA Refseq** [NM\\_000636](#)

**Protein Refseq** [NP\\_000627](#)

**MIM** [147460](#)

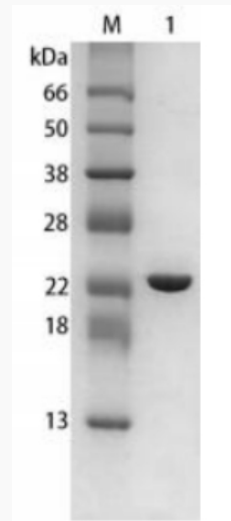
**UniProt ID** [P04179](#)

 Tel: 1-631-559-9269 1-516-512-3133

 Email: [info@creative-biomart.com](mailto:info@creative-biomart.com)  Fax: 1-631-938-8127

 45-1 Ramsey Road, Shirley, NY 11967, USA

**SDS-PAGE**



 Tel: 1-631-559-9269 1-516-512-3133

 Email: [info@creative-biomart.com](mailto:info@creative-biomart.com)  Fax: 1-631-938-8127

 45-1 Ramsey Road, Shirley, NY 11967, USA