

Recombinant Full Length Human SOD2 Protein, C-Flag-tagged

Cat. No. SOD2-1397HFL **Lot. No.** (See product label)

SPECIFICATION

Product Overview Recombinant Full Length Human SOD2 Protein, fused to Flag-tag at C-terminus, was expressed in Mammalian cells.

Species Human

Source Mammalian Cells

Description This gene is a member of the iron/manganese superoxide dismutase family. It encodes a mitochondrial protein that forms a homotetramer and binds one manganese ion per subunit. This protein binds to the superoxide byproducts of oxidative phosphorylation and converts them to hydrogen peroxide and diatomic oxygen. Mutations in this gene have been associated with idiopathic cardiomyopathy (IDC), premature aging, sporadic motor neuron disease, and cancer. Alternative splicing of this gene results in multiple transcript variants. A related pseudogene has been identified on chromosome 1.

Form 25 mM Tris HCl, pH 7.3, 100 mM glycine, 10% glycerol.

Molecular Mass 22.2 kDa

AA Sequence MLSRAVCGTSRQLAPVLGYLGSRQKHSLPDLPHYDYGALEPHINAQIMQLHHSKHHA
 AYVNNLNVTEEKYQ EALAKGDVTAQIALQPALKFNGGGHINHSIFWTNLSPNGGGE
 PKGELLEAIKRDFGSFDKFKELTAASV GVQGSWGWLGFNKERGHQLQIAACPNG
 DPLQGTTGLIPLLIDVWEHAYYLQYKNVRPDYKAIWNVINW
 ENVTERYMACKKTRTRPLEQKLISEEDLAANDILDYKDDDDKV

 Tel: 1-631-559-9269 1-516-512-3133

 Email: info@creative-biomart.com  Fax: 1-631-938-8127

 45-1 Ramsey Road, Shirley, NY 11967, USA

Purity	> 80% as determined by SDS-PAGE and Coomassie blue staining.
Stability	Stable for 12 months from the date of receipt of the product under proper storage and handling conditions. Avoid repeated freeze-thaw cycles.
Storage	Store at -80 centigrade.
Concentration	>50 ug/mL as determined by microplate BCA method.
Preparation	Recombinant protein was captured through anti-DDK affinity column followed by conventional chromatography steps.
Protein Families	Druggable Genome, Transcription Factors
Protein Pathways	Huntington's disease
Full Length	Full L.

GENE INFORMATION

Gene Name	SOD2 superoxide dismutase 2 [Homo sapiens (human)]
Official Symbol	SOD2
Synonyms	GC1; IPOB; IPO-B; MNSOD; MVCD6; GCInc1; Mn-SOD
Gene ID	6648
mRNA Refseq	NM_000636.4
Protein Refseq	NP_000627.2

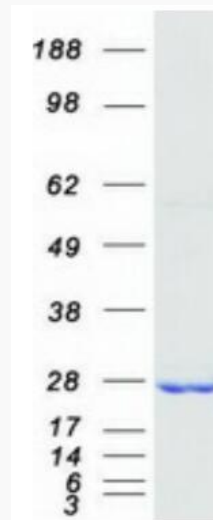
 Tel: 1-631-559-9269 1-516-512-3133

 Email: info@creative-biomart.com  Fax: 1-631-938-8127

 45-1 Ramsey Road, Shirley, NY 11967, USA

MIM 147460

UniProt ID P04179



Coomassie blue staining of purified SOD2 protein.

 Tel: 1-631-559-9269 1-516-512-3133

 Email: info@creative-biomart.com  Fax: 1-631-938-8127

 45-1 Ramsey Road, Shirley, NY 11967, USA