

Recombinant Human SOD2 protein, His-tagged

Cat. No. SOD2-2513H Lot. No. (See product label)

SPECIFICATION

Product Overview	Recombinant Human SOD2 protein(Lys25~Lys222), fused with N-terminal His tag, was expressed in E. coli.
Species	Human
Source	E.coli
ProteinLength	Lys25~Lys222
Tag	N-His
Form	PBS, pH7.4, containing 0.01% SKL, 5%Trehalose.
Bio-activity	<p>Extracellular superoxide dismutase [Cu-Zn] is an enzyme that in humans is encoded by the SOD2 gene. This gene encodes a member of the superoxide dismutase (SOD) protein family. SODs are antioxidant enzymes that catalyze the dismutation of two superoxide radicals into hydrogen peroxide and oxygen. According to the report, in a weakly alkaline buffer solution (pH=8.2) with N-tris(hydroxymethyl)amino methane-HCL, pyrogallol can occur autoxidation in the air, then SOD can inhibit this reaction. Thus, we use this way to measured the activity of recombinant human SOD2. The reaction was performed in adding 8 µl 5 mmol/L pyrogallol to 200 µl 50mmol/L Tris-HCl, rapidly mixing at 25°C, then read at 325 nm (using 50mmol/L Tris-HCl as blank control) in kinetic mode for 3 minutes using a microplate reader controlling the pyrogallol autoxidation rate at 0.70 OD/min. Different concentrations of recombinant human SOD2 were added into 200</p>

 Tel: 1-631-559-9269 1-516-512-3133

 Email: info@creative-biomart.com  Fax: 1-631-938-8127

 45-1 Ramsey Road, Shirley, NY 11967, USA

μ l 50 mmol/L Tris-HCl, incubated for 20 min at 25°C, then adding 8 μ l 5 mmol/L pyrogallol to each well, rapidly mixing and read at 325 nm in kinetic mode for 3 minutes. Under these conditions, the enzyme amount of 50% inhibition of pyrogallol autooxidation per minute is defined as a unit. The specific activity of recombinant human SOD2 is 142.2 U/mg.

Molecular Mass 25.9kDa

Endotoxin <1.0EU per 1 μ g (determined by the LAL method).

Purity >90%

Storage Avoid repeated freeze/thaw cycles. Store at 2-8°C for one month. Aliquot and store at -80°C for 12 months.

Reconstitution Reconstitute in 10mM PBS (pH7.4) to a concentration of 0.1-1.0 mg/mL. Do not vortex.

GENE INFORMATION

Gene Name SOD2 superoxide dismutase 2, mitochondrial [Homo sapiens]

Official Symbol SOD2

Synonyms SOD2; superoxide dismutase 2, mitochondrial; superoxide dismutase [Mn], mitochondrial; indophenoloxidase B; Mn superoxide dismutase; mangano-superoxide dismutase; manganese-containing superoxide dismutase; IPOB; MNSOD; MVCD6;

Gene ID 6648

mRNA Refseq NM_000636

 Tel: 1-631-559-9269 1-516-512-3133

 Email: info@creative-biomart.com  Fax: 1-631-938-8127

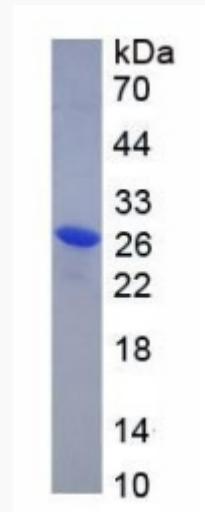
 45-1 Ramsey Road, Shirley, NY 11967, USA

Protein Refseq NP_000627

MIM 147460

UniProt ID P04179

SDS-PAGE



 Tel: 1-631-559-9269 1-516-512-3133

 Email: info@creative-biomart.com  Fax: 1-631-938-8127

 45-1 Ramsey Road, Shirley, NY 11967, USA