

Recombinant Human SOD2 protein, His-tagged

Cat. No. SOD2-355H Lot. No. (See product label)

SPECIFICATION

Product Overview	Recombinant Human SOD2 protein (Lys25-Lys222), fused to His tag at C-terminus, was expressed in E.coli.
Species	Human
Source	E.coli
ProteinLength	198
Description	Superoxide dismutase [Mn], mitochondrial (SOD2), a member of the iron/manganese superoxide dismutase family, can form a homotetramer and bind one manganese ion per subunit. The expression of SOD2 is regulated by KRIT1. Mutations in SOD2 gene have been associated with idiopathic cardiomyopathy (IDC), sporadic motor neuron disease, and cancer. Furthermore, Mn-SOD (SOD2) activity is essential to achieve optimal training-induced protection against both ischemia/reperfusion(IR)-induced cardiac arrhythmias and infarction.
Form	Lyophilized from 0.22 um filtered solution in PBS, pH7.4, 10% trehalose.
Molecular Mass	The protein has a calculated MW of 23.2 kDa. The protein migrates as 27 kDa under reducing (R) condition (SDS-PAGE).
Endotoxin	Less than 1.0 EU per ug by the LAL method.
Purity	>95% as determined by SDS-PAGE.

 Tel: 1-631-559-9269 1-516-512-3133

 Email: info@creative-biomart.com  Fax: 1-631-938-8127

 45-1 Ramsey Road, Shirley, NY 11967, USA

Storage

For long term storage, the product should be stored at lyophilized state at -20 centigrade or lower.

Please avoid repeated freeze-thaw cycles.

This product is stable after storage at:

- 20 centigrade to -70 centigrade for 12 months in lyophilized state;
- 70 centigrade for 3 months under sterile conditions after reconstitution.

Reconstitution

It is recommended that sterile water be added to the vial to prepare a stock solution of 0.2 ug/ul. Centrifuge the vial at 4°C before opening to recover the entire contents.

GENE INFORMATION

Gene Name [SOD2](#)

Official Symbol [SOD2](#)

Synonyms SOD2; superoxide dismutase 2, mitochondrial; superoxide dismutase [Mn], mitochondrial; indophenoxidase B; Mn superoxide dismutase; mangano-superoxide dismutase; manganese-containing superoxide dismutase; IPOB; MNSOD; MVCD6

Gene ID [6648](#)

mRNA Refseq [NM_000636](#)

Protein Refseq [NP_000627](#)

MIM [147460](#)

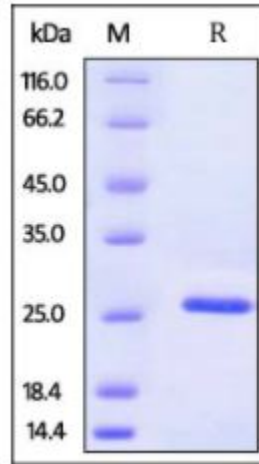
UniProt ID [P04179](#)

 Tel: 1-631-559-9269 1-516-512-3133

 Email: info@creative-biomart.com  Fax: 1-631-938-8127

 45-1 Ramsey Road, Shirley, NY 11967, USA

SDS-PAGE of SOD2-355H



Human SOD2, His Tag on SDS-PAGE under reducing (R) condition. The gel was stained overnight with Coomassie Blue. The purity of the protein is greater than 95%.

 Tel: 1-631-559-9269 1-516-512-3133

 Email: info@creative-biomart.com  Fax: 1-631-938-8127

 45-1 Ramsey Road, Shirley, NY 11967, USA