

## Recombinant Full Length Human SOD3 Protein, Tag Free

Cat. No. SOD3-1038H Lot. No. (See product label)

### SPECIFICATION

<b>Product Overview</b>	Recombinant Full Length Human SOD3 Protein (1-240 aa) without tag was expressed in E. coli.
<b>Species</b>	Human
<b>Source</b>	E.coli
<b>ProteinLength</b>	1-240 aa
<b>Description</b>	<p>This gene encodes a member of the superoxide dismutase (SOD) protein family. SODs are antioxidant enzymes that catalyze the conversion of superoxide radicals into hydrogen peroxide and oxygen, which may protect the brain, lungs, and other tissues from oxidative stress. Proteolytic processing of the encoded protein results in the formation of two distinct homotetramers that differ in their ability to interact with the extracellular matrix (ECM). Homotetramers consisting of the intact protein, or type C subunit, exhibit high affinity for heparin and are anchored to the ECM. Homotetramers consisting of a proteolytically cleaved form of the protein, or type A subunit, exhibit low affinity for heparin and do not interact with the ECM. A mutation in this gene may be associated with increased heart disease risk.</p>
<b>Tag</b>	Non
<b>Molecular Mass</b>	24 kDa
<b>AA Sequence</b>	WTGEDSAEPNSDSA EWIRDMYAKVTEIWQEVMQRRDDD GALHAACQVQPSATLD

 Tel: 1-631-559-9269 1-516-512-3133

 Email: [info@creative-biomart.com](mailto:info@creative-biomart.com)  Fax: 1-631-938-8127

 45-1 Ramsey Road, Shirley, NY 11967, USA

AAQPRVTGVVLFQRQLAPRAKLDAFFALEGFPTEPNSSSRRAIHVHQFGDLSQGCEST  
 GPHYNPLAVPHPQHPGDFGNFAVRDGLWRYRAGLAASLAGPHSIVGRAVVVHAG  
 EDDLGRGGNQASVENGNAGRRLACCVVGVCGPGLWERQAREHSERKKRRRESE  
 CKA

**Endotoxin** < 1 EU/μg by LAL

**Purity** > 90% by SDS-PAGE

**Storage** Store it under sterile conditions at -20 to -80 centigrade. It is recommended that the protein be aliquoted for optimal storage. Avoid repeated freeze-thaw cycles.

**Storage Buffer** Sterile 50mM Tris, pH8.0, 300mM NaCl, 0.1% SKL

**Concentration** 0.11 mg/mL by BCA

## GENE INFORMATION

**Gene Name** SOD3 superoxide dismutase 3, extracellular [ Homo sapiens (human) ]

**Official Symbol** SOD3

**Synonyms** SOD3; superoxide dismutase 3, extracellular; extracellular superoxide dismutase [Cu-Zn]; EC SOD; EC-SOD; MGC20077

**Gene ID** 6649

**mRNA Refseq** NM\_003102

**Protein Refseq** NP\_003093

 Tel: 1-631-559-9269 1-516-512-3133

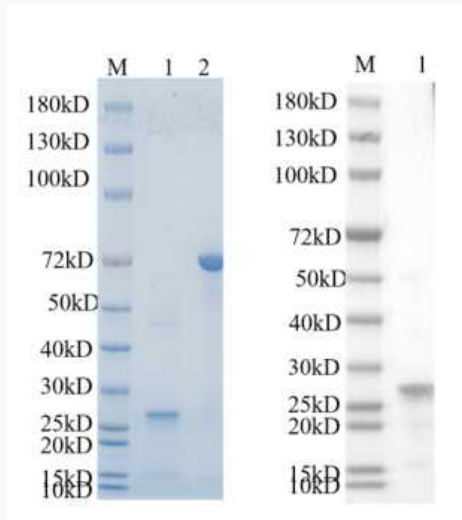
 Email: [info@creative-biomart.com](mailto:info@creative-biomart.com)  Fax: 1-631-938-8127

 45-1 Ramsey Road, Shirley, NY 11967, USA

**MIM** 185490

**UniProt ID** P08294

**Reducing 4%-20%  
SDS-PAGE (CBB  
stained) and WB  
(anti-SOD3 antibody)  
analysis profiles of  
purified SOD3.**



1. SOD3: 1  $\mu$ g
2. BSA: 1  $\mu$ g

 Tel: 1-631-559-9269 1-516-512-3133

 Email: [info@creative-biomart.com](mailto:info@creative-biomart.com)  Fax: 1-631-938-8127

 45-1 Ramsey Road, Shirley, NY 11967, USA