

Recombinant Full Length Human SOD3 Protein, C-Flag-tagged

Cat. No. SOD3-586HFL Lot. No. (See product label)

SPECIFICATION

Product Overview	Recombinant Full Length Human SOD3 Protein, fused to Flag-tag at C-terminus, was expressed in Mammalian cells.
Species	Human
Source	Mammalian Cells
Description	<p>This gene encodes a member of the superoxide dismutase (SOD) protein family. SODs are antioxidant enzymes that catalyze the conversion of superoxide radicals into hydrogen peroxide and oxygen, which may protect the brain, lungs, and other tissues from oxidative stress. Proteolytic processing of the encoded protein results in the formation of two distinct homotetramers that differ in their ability to interact with the extracellular matrix (ECM). Homotetramers consisting of the intact protein, or type C subunit, exhibit high affinity for heparin and are anchored to the ECM. Homotetramers consisting of a proteolytically cleaved form of the protein, or type A subunit, exhibit low affinity for heparin and do not interact with the ECM. A mutation in this gene may be associated with increased heart disease risk.</p>
Form	25 mM Tris HCl, pH 7.3, 100 mM glycine, 10% glycerol.
Molecular Mass	24.1 kDa
AA Sequence	MLALLCSCLLLAAGASDAWTGEDSAEPNSDSA EWIRDMYAKVTEIWQEVMQRRDD DGTLHAACQVQPSAT LDAAQPRVTGVVLFRLAPRAKLDAFFALEGFPTEPNSSSR AIHVHQFGDLSQGCESTGPHYNPLAVPHP QHPGDFGNFAVRDGLWRYRAGLAA

 Tel: 1-631-559-9269 1-516-512-3133

 Email: info@creative-biomart.com  Fax: 1-631-938-8127

 45-1 Ramsey Road, Shirley, NY 11967, USA



SLAGPHSIVGRAVVVHAGEDDLGRGGNQASVENGNAGRRLACCVV
GVCGPGLWERQAREHSERKKRRRESECKAATRTRPLEQKLISEEDLAANDILDYKD
DDDKV

Purity > 80% as determined by SDS-PAGE and Coomassie blue staining.

Stability Stable for 12 months from the date of receipt of the product under proper storage and handling conditions. Avoid repeated freeze-thaw cycles.

Storage Store at -80 centigrade.

Concentration >50 ug/mL as determined by microplate BCA method.

Preparation Recombinant protein was captured through anti-DDK affinity column followed by conventional chromatography steps.

Protein Families Druggable Genome, Secreted Protein

Full Length Full L.

GENE INFORMATION

Gene Name SOD3 superoxide dismutase 3 [Homo sapiens (human)]

Official Symbol SOD3

Synonyms EC-SOD

Gene ID 6649

mRNA Refseq NM_003102.4

Tel: 1-631-559-9269 1-516-512-3133

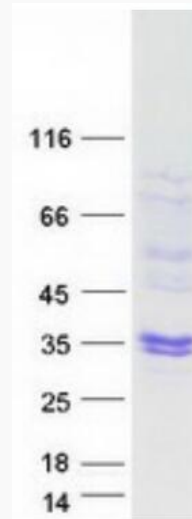
Email: info@creative-biomart.com Fax: 1-631-938-8127

45-1 Ramsey Road, Shirley, NY 11967, USA

Protein Refseq NP_003093.2

MIM 185490

UniProt ID P08294



Coomassie blue staining of purified SOD3 protein.

 Tel: 1-631-559-9269 1-516-512-3133

 Email: info@creative-biomart.com  Fax: 1-631-938-8127

 45-1 Ramsey Road, Shirley, NY 11967, USA