

Recombinant Human SOHLH2 protein, GST-tagged

Cat. No. SOHLH2-2177H Lot. No. (See product label)

SPECIFICATION

Product Overview	Recombinant Human SOHLH2 protein(1-225 aa), fused with N-terminal GST tag, was expressed in E. coli.
Species	Human
Source	E. coli
ProteinLength	1-225 aa
Form	The purified protein was lyophilized from sterile phosphate-buffered saline (PBS: 58 mM Na ₂ HPO ₄ , 17 mM NaH ₂ PO ₄ , 68 mM NaCl, pH 8.0). Prior to lyophilization, 5% (w/v) trehalose and 5% (w/v) mannitol were incorporated as cryoprotective excipients. The protein was eluted with a buffer containing 100 mM reduced glutathione (GSH).
AASequence	MASSIICQEHCQISGQAKIDILLVGDVTVGYLADTVQKLFANIAEVTITISDTKEAALLD DCIFNMVLLKVPSSLSAELEAIKLIRFGKKKNTHSLFVFIIPENFKGCISGHGMDIALT EPLTMEKMSNVVQYWTTCPSNTVKTENATGPEELGLPLQRSYSEHLGYFPTDLFAC SESLRNGNGLELNASLSEFEKNKKISLLHSSKEKLRRLYRKHSSFCFW
Purity	85%, by SDS-PAGE.
Storage	Store at 2-8°C for 1-2 weeks. Aliquot and store at -20°C to -80°C for up to 3 months, reconstitution with sterile water and addition of an equal volume of glycerol. Avoid repeat freeze-thaw cycles.

 Tel: 1-631-559-9269 1-516-512-3133

 Email: info@creative-biomart.com  Fax: 1-631-938-8127

 45-1 Ramsey Road, Shirley, NY 11967, USA



Reconstitution It is recommended that sterile water be added to the vial to prepare a stock solution of 0.25 ug/ul. Centrifuge the vial at 4°C before opening to recover the entire contents.

GENE INFORMATION

Gene Name SOHLH2 spermatogenesis and oogenesis specific basic helix-loop-helix 2 [Homo sapiens]

Official Symbol SOHLH2

Synonyms SOHLH2; spermatogenesis and oogenesis specific basic helix-loop-helix 2; spermatogenesis- and oogenesis-specific basic helix-loop-helix-containing protein 2; bHLHe81; FLJ20449; TEB1; FLJ57222;

mRNA Refseq NM_017826

Protein Refseq NP_060296

UniProt ID Q9NX45

Gene ID 54937

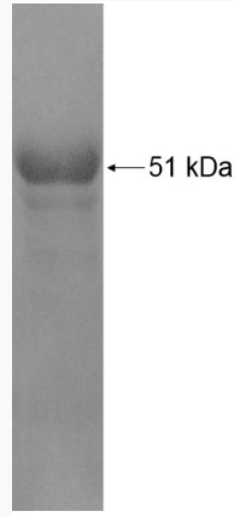
 Tel: 1-631-559-9269 1-516-512-3133

 Email: info@creative-biomart.com  Fax: 1-631-938-8127

 45-1 Ramsey Road, Shirley, NY 11967, USA



SDS-PAGE



Tel: 1-631-559-9269 1-516-512-3133

Email: info@creative-biomart.com Fax: 1-631-938-8127

45-1 Ramsey Road, Shirley, NY 11967, USA