

Recombinant Human SOHLH2 protein, His-tagged

Cat. No. SOHLH2-2876H Lot. No. (See product label)

SPECIFICATION

| | |
|-------------------------|--|
| Product Overview | Recombinant Human SOHLH2 protein(1-225 aa), fused with N-terminal His tag, was expressed in E. coli. |
| Species | Human |
| Source | E. coli |
| ProteinLength | 1-225 aa |
| Form | The purified protein was lyophilized from sterile phosphate-buffered saline (PBS: 58 mM Na ₂ HPO ₄ , 17 mM NaH ₂ PO ₄ , 68 mM NaCl, pH 7.4). Prior to lyophilization, 5% (w/v) trehalose and 5% (w/v) mannitol were incorporated as cryoprotective excipients. The protein was eluted with a buffer containing 300 mM imidazole. |
| AASequence | MASSIICQEHCQISGQAKIDILLVGDVTVGYLADTVQKLFANIAEVTITISDTKEAALLD DCIFNMVLLKVPSSLSAELEAIKLIRFGKKKNTSLFVFIIPENFKGCISGHGMDIALT EPLTMEKMSNVVKYWTTCPSTNTVKTENATGPEELGLPLQRSYSEHLGYFPTDLFAC SESLRNGNGLELNASLSEFEKNKKISLLHSSKEKLRRLYRKHSSFCFW |
| Purity | 85%, by SDS-PAGE. |
| Storage | Store at 2-8°C for 1-2 weeks. Aliquot and store at -20°C to -80°C for up to 3 months, reconstitution with sterile water and addition of an equal volume of glycerol. Avoid repeat freeze-thaw cycles. |

 Tel: 1-631-559-9269 1-516-512-3133

 Email: info@creative-biomart.com  Fax: 1-631-938-8127

 45-1 Ramsey Road, Shirley, NY 11967, USA

Reconstitution It is recommended that sterile water be added to the vial to prepare a stock solution of 0.25 ug/ul. Centrifuge the vial at 4°C before opening to recover the entire contents.

GENE INFORMATION

Gene Name SOHLH2 spermatogenesis and oogenesis specific basic helix-loop-helix 2 [Homo sapiens]

Official Symbol SOHLH2

Synonyms SOHLH2; spermatogenesis and oogenesis specific basic helix-loop-helix 2; spermatogenesis- and oogenesis-specific basic helix-loop-helix-containing protein 2; bHLHe81; FLJ20449; TEB1; FLJ57222;

mRNA Refseq NM_017826

Protein Refseq NP_060296

UniProt ID Q9NX45

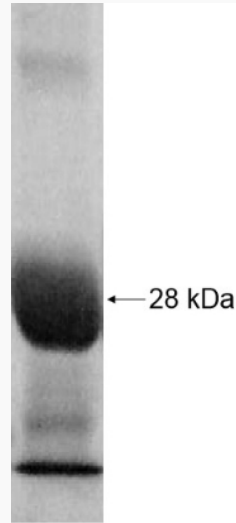
Gene ID 54937

 Tel: 1-631-559-9269 1-516-512-3133

 Email: info@creative-biomart.com  Fax: 1-631-938-8127

 45-1 Ramsey Road, Shirley, NY 11967, USA

SDS-PAGE



 Tel: 1-631-559-9269 1-516-512-3133

 Email: info@creative-biomart.com  Fax: 1-631-938-8127

 45-1 Ramsey Road, Shirley, NY 11967, USA