

Recombinant Human SOHLH2 Protein, GST-tagged

Cat. No. SOHLH2-4259H Lot. No. (See product label)

SPECIFICATION

Product Overview	Human FLJ20449 full-length ORF (AAH25383, 1 a.a. - 225 a.a.) recombinant protein with GST-tag at N-terminal.
Species	Human
Source	Wheat Germ
Description	<p>This gene encodes one of testis-specific transcription factors which are essential for spermatogenesis, oogenesis and folliculogenesis. This gene is located on chromosome 13. The proteins encoded by this gene and another testis-specific transcription factor, SOHLH1, can form heterodimers, in addition to homodimers. There is a read-through locus (GeneID: 100526761) that shares sequence identity with this gene and the upstream CCDC169 (GeneID: 728591). Alternatively spliced transcript variants encoding different isoforms have been found for this gene. [provided by RefSeq, Aug 2013]</p>
Molecular Mass	50.49 kDa
AA Sequence	<p>MASSIICQEHCQISGQAKIDILLVGDVTVGYLADTVQKLFANIAEVTITISDTKEAALLD DCIFNMVLLKVPSSLSAELEAIKLIRFGKKKNTHSLFVFIIPENFKGCISGHGMDIALT EPLTMEKMSNVVQYWTTCPSNTVKTENATGPEELGLPLQRSYSEHLGYFPTDLFAC SESLRNGNGLELNASLSEFEKNKKISLLHSSKEKLRRLYRKHSSFCFW</p>
Applications	<p>Enzyme-linked Immunoabsorbent Assay Western Blot (Recombinant protein)</p>

 Tel: 1-631-559-9269 1-516-512-3133

 Email: info@creative-biomart.com  Fax: 1-631-938-8127

 45-1 Ramsey Road, Shirley, NY 11967, USA

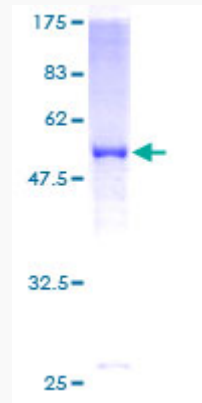
	Antibody Production Protein Array
Notes	Best use within three months from the date of receipt of this protein.
Storage	Store at -80 centigrade. Aliquot to avoid repeated freezing and thawing.
Storage Buffer	50 mM Tris-HCl, 10 mM reduced Glutathione, pH=8.0 in the elution buffer.
GENE INFORMATION	
Gene Name	SOHLH2 spermatogenesis and oogenesis specific basic helix-loop-helix 2 [Homo sapiens]
Official Symbol	SOHLH2
Synonyms	SOHLH2; spermatogenesis and oogenesis specific basic helix-loop-helix 2; spermatogenesis- and oogenesis-specific basic helix-loop-helix-containing protein 2; bHLHe81; FLJ20449; TEB1; FLJ57222;
Gene ID	54937
mRNA Refseq	NM_017826
Protein Refseq	NP_060296
MIM	616066
UniProt ID	Q9NX45

 Tel: 1-631-559-9269 1-516-512-3133

 Email: info@creative-biomart.com  Fax: 1-631-938-8127

 45-1 Ramsey Road, Shirley, NY 11967, USA

**Quality Control
Testing**



12.5% SDS-PAGE Stained with Coomassie Blue.

 Tel: 1-631-559-9269 1-516-512-3133

 Email: info@creative-biomart.com  Fax: 1-631-938-8127

 45-1 Ramsey Road, Shirley, NY 11967, USA