

## Active Recombinant Human SORL1 Protein, His-tagged

Cat. No. SORL1-01H Lot. No. (See product label)

### SPECIFICATION

<b>Product Overview</b>	Recombinant Human SorLA (Ser82-Pro753) Protein with a C-terminal 6-His tag was expressed in HEK293 cells.
<b>Species</b>	Human
<b>Source</b>	HEK293
<b>ProteinLength</b>	82-753
<b>Description</b>	This gene encodes a mosaic protein that belongs to at least two families: the vacuolar protein sorting 10 (VPS10) domain-containing receptor family, and the low density lipoprotein receptor (LDLR) family. The encoded protein also contains fibronectin type III repeats and an epidermal growth factor repeat. The encoded preproprotein is proteolytically processed to generate the mature receptor, which likely plays roles in endocytosis and sorting. Mutations in this gene may be associated with Alzheimer's disease.
<b>Bio-activity</b>	Measured by its binding ability in a functional ELISA. Immobilized Recombinant Human SorLA at 2 µg/mL (100 µL/well) can bind Recombinant Human beta-NGF with an ED50 of 0.1-0.5 µg/mL.
<b>Molecular Mass</b>	76 kDa
<b>N-terminal Sequence Analysis</b>	Ser82

 Tel: 1-631-559-9269 1-516-512-3133

 Email: [info@creative-biomart.com](mailto:info@creative-biomart.com)  Fax: 1-631-938-8127

 45-1 Ramsey Road, Shirley, NY 11967, USA

<b>Endotoxin</b>	<0.10 EU per 1 µg of the protein by the LAL method.
<b>Purity</b>	>95%, by SDS-PAGE visualized with Silver Staining and quantitative densitometry by Coomassie® Blue Staining.
<b>Storage</b>	12 months from date of receipt, ≤ -20 centigrade as supplied. 1 month, 2 to 8 centigrade under sterile conditions after reconstitution. 3 months, ≤ -20 centigrade under sterile conditions after reconstitution.
<b>Storage Buffer</b>	Lyophilized from a 0.2 µm filtered solution in PBS.
<b>Reconstitution</b>	Reconstitute at 1 mg/mL in PBS.
<b>Shipping</b>	The product is shipped at ambient temperature.

## GENE INFORMATION

<b>Gene Name</b>	<a href="#">SORL1 sortilin related receptor 1 [ Homo sapiens (human) ]</a>
<b>Official Symbol</b>	<a href="#">SORL1</a>
<b>Synonyms</b>	SORL1; sortilin related receptor 1; LR11; LRP9; SORLA; gp250; SorLA-1; C11orf32; sortilin-related receptor; LDLR relative with 11 ligand-binding repeats; low-density lipoprotein receptor relative with 11 ligand-binding repeats; mosaic protein LR11; sortilin-related receptor, L(DLR class) A repeats containing; sorting protein-related receptor containing LDLR class A repeats
<b>Gene ID</b>	<a href="#">6653</a>
<b>mRNA Refseq</b>	<a href="#">NM_003105</a>

 Tel: 1-631-559-9269 1-516-512-3133

 Email: [info@creative-biomart.com](mailto:info@creative-biomart.com)  Fax: 1-631-938-8127

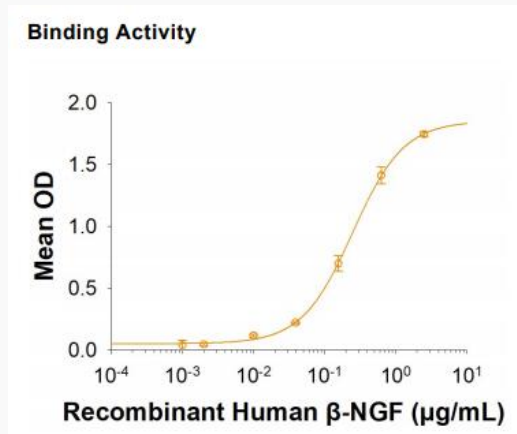
 45-1 Ramsey Road, Shirley, NY 11967, USA

**Protein Refseq** NP\_003096

**MIM** 602005

**UniProt ID** Q92673

**Binding Activity**



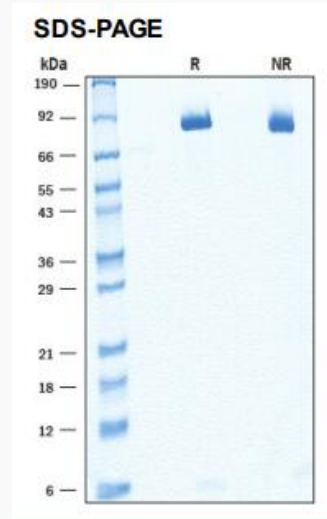
When Recombinant Human SorLA is immobilized at 2  $\mu\text{g/mL}$ , Recombinant Human beta -NGF binds with an ED50 of 0.1-0.5  $\mu\text{g/mL}$ .

 Tel: 1-631-559-9269 1-516-512-3133

 Email: [info@creative-biomart.com](mailto:info@creative-biomart.com)  Fax: 1-631-938-8127

 45-1 Ramsey Road, Shirley, NY 11967, USA

**SDS-PAGE**



2 µg/lane of Recombinant Human SorLA was resolved with SDS-PAGE under reducing (R) and non-reducing (NR) conditions and visualized by Coomassie® Blue staining, showing bands 85 - 99 kDa.

 Tel: 1-631-559-9269 1-516-512-3133

 Email: [info@creative-biomart.com](mailto:info@creative-biomart.com)  Fax: 1-631-938-8127

 45-1 Ramsey Road, Shirley, NY 11967, USA