

## Recombinant Human SORT1 protein, GST-tagged

Cat. No. SORT1-29618TH Lot. No. (See product label)

### SPECIFICATION

<b>Product Overview</b>	Recombinant Human SORT1(203 a.a. - 299 a.a.) fused with GST tag at N-terminal was expressed in Wheat Germ.
<b>Species</b>	Human
<b>Source</b>	Wheat Germ
<b>ProteinLength</b>	203-299 a.a.
<b>Description</b>	This gene encodes a member of the VPS10-related sortilin family of proteins. The encoded preproprotein is proteolytically processed by furin to generate the mature receptor. This receptor plays a role in the trafficking of different proteins to either the cell surface, or subcellular compartments such as lysosomes and endosomes. Expression levels of this gene may influence the risk of myocardial infarction in human patients. Alternative splicing results in multiple transcript variants.
<b>Form</b>	50 mM Tris-HCl, 10 mM reduced Glutathione, pH=8.0 in the elution buffer.
<b>Molecular Mass</b>	36.41 kDa
<b>AA Sequence</b>	FAKNFVQTDLPFHPLTQMMYSPQNSDYLLALSTENGLWVSKNFGGKWEEIHKAVCL AKWGSDNTIFFTTYANGSCKADLGALELWRTSDLGKSFKTI
<b>Applications</b>	Enzyme-linked Immunoabsorbent Assay; Western Blot (Recombinant protein); Antibody Production; Protein Array

 Tel: 1-631-559-9269 1-516-512-3133

 Email: [info@creative-biomart.com](mailto:info@creative-biomart.com)  Fax: 1-631-938-8127

 45-1 Ramsey Road, Shirley, NY 11967, USA

**Notes** Best use within three months from the date of receipt of this protein.

**Storage** Store at -80 centigrade. Aliquot to avoid repeated freezing and thawing.

## GENE INFORMATION

**Gene Name** SORT1 sortilin 1 [ Homo sapiens ]

**Official Symbol** SORT1

**Synonyms** SORT1; sortilin 1; sortilin; Gp95; NT3; NTR3; glycoprotein 95; 100 kDa NT receptor; neurotensin receptor 3; LDLCQ6;

**Gene ID** 6272

**mRNA Refseq** NM\_002959

**Protein Refseq** NP\_002950

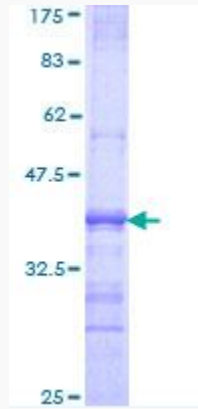
**MIM** 602458

**UniProt ID** Q99523

 Tel: 1-631-559-9269 1-516-512-3133

 Email: [info@creative-biomart.com](mailto:info@creative-biomart.com)  Fax: 1-631-938-8127

 45-1 Ramsey Road, Shirley, NY 11967, USA



 Tel: 1-631-559-9269 1-516-512-3133

 Email: [info@creative-biomart.com](mailto:info@creative-biomart.com)  Fax: 1-631-938-8127

 45-1 Ramsey Road, Shirley, NY 11967, USA