

## Recombinant Human SOST Protein, His-tagged

**Cat. No.** SOST-04H    **Lot. No.** (See product label)

### SPECIFICATION

<b>Product Overview</b>	Recombinant human SOST/Sclerostin (24-213 aa), fused to His-tag at C-terminus, was expressed in HEK293 cell and purified by using conventional chromatography techniques.
<b>Species</b>	Human
<b>Source</b>	HEK293
<b>ProteinLength</b>	200
<b>Description</b>	Sclerostin is a secreted glycoprotein with a C-terminal cysteine knot-like (CTCK) domain and sequence similarity to the DAN (differential screening-selected gene aberrative in neuroblastoma) family of bone morphogenetic protein (BMP) antagonists. Loss-of-function mutations in this gene are associated with an autosomal-recessive disorder, sclerosteosis, which causes progressive bone overgrowth. A deletion downstream of this gene, which causes reduced sclerostin expression, is associated with a milder form of the disorder called van Buchem disease.
<b>Form</b>	Liquid
<b>Molecular Mass</b>	22.7 kDa
<b>AA Sequence</b>	QGWQAFKNDATEIIPELGEYPEPPPELENNKTMNRAENGGRPPHHPFETKDVSEYS CRELHFTRYVTDGPCRSAPVTELVCSGQCGRLLPNAIGRGKWWRPSGPDFRC

 Tel: 1-631-559-9269    1-516-512-3133

 Email: [info@creative-biomart.com](mailto:info@creative-biomart.com)     Fax: 1-631-938-8127

 45-1 Ramsey Road, Shirley, NY 11967, USA

IPDRYRAQRVQLLCPGGAPRARKVRLVASCKCKRLTRFHNQSELKDFGTEAARPQ  
KGRKPRPRARSAKANQAELENAY

**Endotoxin** < 1 EU/μg of protein (determined by LAL method)

**Purity** > 95% by SDS-PAGE

**Applications** SDS-PAGE

**Storage** Can be stored at +2 to +8 centigrade for 1 week. For long term storage, aliquot and store at -20 to -80 centigrade. Avoid repeated freezing and thawing cycles.

**Concentration** 0.25 mg/mL (determined by Bradford assay)

**Storage Buffer** Phosphate-Buffered Saline (pH 7.4) containing 30% glycerol

## GENE INFORMATION

**Gene Name** [SOST sclerostin \[ Homo sapiens \(human\) \]](#)

**Official Symbol** [SOST](#)

**Synonyms** SOST; sclerostin; CDD; VBCH; DAND6; SOST1; sclerostin

**Gene ID** [50964](#)

**mRNA Refseq** [NM\\_025237](#)

**Protein Refseq** [NP\\_079513](#)

**MIM** [605740](#)

 Tel: 1-631-559-9269 1-516-512-3133

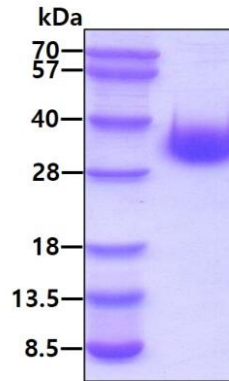
 Email: [info@creative-biomart.com](mailto:info@creative-biomart.com)  Fax: 1-631-938-8127

 45-1 Ramsey Road, Shirley, NY 11967, USA

UniProt ID

Q9BQB4

SDS-PAGE



3  $\mu$ g by SDS-PAGE under reducing condition and visualized by coomassie blue stain.

 Tel: 1-631-559-9269 1-516-512-3133

 Email: [info@creative-biomart.com](mailto:info@creative-biomart.com)  Fax: 1-631-938-8127

 45-1 Ramsey Road, Shirley, NY 11967, USA