

Recombinant Human SOST Protein, His-tagged

Cat. No. SOST-1236H Lot. No. (See product label)

SPECIFICATION

Product Overview	Recombinant Human SOST Protein (Gly25-Tyr213) with His tag was expressed in 293F.
Species	Human
Source	HEK293
ProteinLength	Gly25-Tyr213
Description	Sclerostin is a secreted glycoprotein with a C-terminal cysteine knot-like (CTCK) domain and sequence similarity to the DAN (differential screening-selected gene aberrative in neuroblastoma) family of bone morphogenetic protein (BMP) antagonists. Loss-of-function mutations in this gene are associated with an autosomal-recessive disorder, sclerosteosis, which causes progressive bone overgrowth. A deletion downstream of this gene, which causes reduced sclerostin expression, is associated with a milder form of the disorder called van Buchem disease.
Form	Freeze-dried powder
Molecular Mass	Predicted Molecular Mass: 23.0 kDa; Accurate Molecular Mass: 22&25 kDa
Purity	> 95%
Applications	Positive Control; Immunogen; SDS-PAGE; WB.

 Tel: 1-631-559-9269 1-516-512-3133

 Email: info@creative-biomart.com  Fax: 1-631-938-8127

 45-1 Ramsey Road, Shirley, NY 11967, USA



Stability	The thermal stability is described by the loss rate. The loss rate was determined by accelerated thermal degradation test, that is, incubate the protein at 37 centigrade for 48h, and no obvious degradation and precipitation were observed. The loss rate is less than 5% within the expiration date under appropriate storage condition.
Storage	Avoid repeated freeze/thaw cycles. Store at 2-8 centigrade for one month. Aliquot and store at -80 centigrade for 12 months.
Storage Buffer	PBS, pH7.4, containing 0.01% SKL, 1mM DTT, 5% Trehalose and Proclin300.
Reconstitution	Reconstitute in 10mM PBS (pH7.4) to a concentration of 0.1-1.0 mg/mL. Do not vortex.

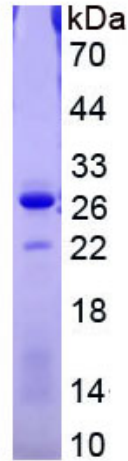
GENE INFORMATION

Gene Name	SOST sclerostin [Homo sapiens (human)]
Official Symbol	SOST
Synonyms	SOST; sclerostin; sclerosteosis; VBCH;
Gene ID	50964
mRNA Refseq	NM_025237
Protein Refseq	NP_079513
MIM	605740
UniProt ID	Q9BQB4

Tel: 1-631-559-9269 1-516-512-3133

Email: info@creative-biomart.com Fax: 1-631-938-8127

45-1 Ramsey Road, Shirley, NY 11967, USA



Tel: 1-631-559-9269 1-516-512-3133

Email: info@creative-biomart.com Fax: 1-631-938-8127

45-1 Ramsey Road, Shirley, NY 11967, USA