

Recombinant Rat SOSTDC1 Protein (24-206 aa), His-Myc-tagged

Cat. No. SOSTDC1-2434R **Lot. No.** (See product label)

SPECIFICATION

Product Overview	Recombinant Rat SOSTDC1 Protein (24-206 aa) is produced by Yeast expression system. This protein is fused with a 10xHis tag at the N-terminal and a Myc tag at the C-terminal. Research Area: Signal Transduction. Protein Description: Full Length of Mature Protein.
Species	Rat
Source	Yeast
ProteinLength	24-206 aa
Description	Directly antagonizes activity of BMP2, BMP4, BMP6 and BMP7 in a dose-dependent manner. May be involved in the onset of endometrial receptivity for implantation/sensitization for the decidual cell reaction. Enhances Wnt signaling and inhibits TGF-beta signaling.
Form	Tris-based buffer,50% glycerol
Molecular Mass	24.6 kDa
AA Sequence	FKNDATEILYSHVVKPVSAHPSSNSTLNQARNGGRHFSSSTGLDRNSRVQVGCRELR STKYISDGQCTSISPLKELVCAGECLPLPVLPNWIGGGYGTKYWSRRSSQEWRCVN DKTRTRQRIQLQCQDGSTRTYKITVVTACKCKRYTRQHNESSHNFESVSPAKPAQHH RERKRASKSSKHLS

 Tel: 1-631-559-9269 1-516-512-3133

 Email: info@creative-biomart.com  Fax: 1-631-938-8127

 45-1 Ramsey Road, Shirley, NY 11967, USA

Purity	> 85% as determined by SDS-PAGE.
Notes	Repeated freezing and thawing is not recommended. Store working aliquots at 4 centigrade for up to one week.
Storage	The shelf life is related to many factors, storage state, buffer ingredients, storage temperature and the stability of the protein itself. Generally, the shelf life of liquid form is 6 months at -20 centigrade/-80 centigrade. The shelf life of lyophilized form is 12 months at -20 centigrade/-80 centigrade.
Concentration	A hardcopy of COA will be sent along with the products. Please refer to it for detailed information.

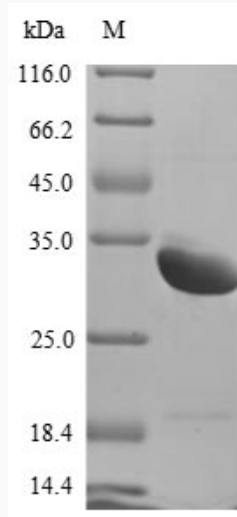
GENE INFORMATION

Gene Name	Sostdc1 sclerostin domain containing 1 [Rattus norvegicus]
Official Symbol	SOSTDC1
Synonyms	SOSTDC1; sclerostin domain containing 1; USAG-1; wnt-signaling modulator; Usag1;
Gene ID	266803
mRNA Refseq	NM_153737
Protein Refseq	NP_714959
UniProt ID	Q642G2

 Tel: 1-631-559-9269 1-516-512-3133

 Email: info@creative-biomart.com  Fax: 1-631-938-8127

 45-1 Ramsey Road, Shirley, NY 11967, USA



(Tris-Glycine gel) Discontinuous SDS-PAGE (reduced) with 5% enrichment gel and 15% separation gel.

 Tel: 1-631-559-9269 1-516-512-3133

 Email: info@creative-biomart.com  Fax: 1-631-938-8127

 45-1 Ramsey Road, Shirley, NY 11967, USA