

## Recombinant Human SOX11 Protein, His tagged

**Cat. No.** SOX11-22H    **Lot. No.** (See product label)

### SPECIFICATION

<b>Product Overview</b>	Purified recombinant protein of Human SRY (sex determining region Y)-box 11 (SOX11), Ala157-Glu224-GGGGS-Glu242-Ala334, with N-terminal His tag, expressed in E. coli.
<b>Species</b>	Human
<b>Source</b>	E.coli
<b>Description</b>	This intronless gene encodes a member of the SOX (SRY-related HMG-box) family of transcription factors involved in the regulation of embryonic development and in the determination of the cell fate. The encoded protein may act as a transcriptional regulator after forming a protein complex with other proteins. The protein may function in the developing nervous system and play a role in tumorigenesis.
<b>Molecular Mass</b>	16.6 kDa
<b>Purity</b>	> 80 % as determined by SDS-PAGE and Coomassie blue staining
<b>Notes</b>	For testing in cell culture applications, please filter before use. Note that you may experience some loss of protein during the filtration process.
<b>Stability</b>	Stable for 12 months from the date of receipt of the product under proper storage and handling conditions. Avoid repeated freeze-thaw cycles.
<b>Storage</b>	Store at -80 centigrade after receiving vials.

 Tel: 1-631-559-9269    1-516-512-3133

 Email: [info@creative-biomart.com](mailto:info@creative-biomart.com)     Fax: 1-631-938-8127

 45-1 Ramsey Road, Shirley, NY 11967, USA

**Storage Buffer** 25 mM Tris-HCl, pH 8.0, 150 mM NaCl, 10 % glycerol

**Concentration** > 0.05 µg/µL as determined by microplate BCA method

## GENE INFORMATION

**Gene Name** SOX11 SRY-box transcription factor 11 [ Homo sapiens (human) ]

**Official Symbol** SOX11

**Synonyms** SOX11; SRY (sex determining region Y)-box 11; transcription factor SOX-11; SRY related HMG box gene 11; SRY-related HMG-box gene 11; SRY (sex-determining region Y)-box 11;

**Gene ID** 6664

**mRNA Refseq** NM\_003108

**Protein Refseq** NP\_003099

**MIM** 600898

**UniProt ID** P35716

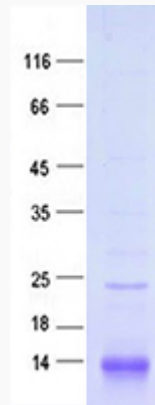
 Tel: 1-631-559-9269 1-516-512-3133

 Email: [info@creative-biomart.com](mailto:info@creative-biomart.com)  Fax: 1-631-938-8127

 45-1 Ramsey Road, Shirley, NY 11967, USA



SDS-PAGE



Tel: 1-631-559-9269 1-516-512-3133

Email: [info@creative-biomart.com](mailto:info@creative-biomart.com) Fax: 1-631-938-8127

45-1 Ramsey Road, Shirley, NY 11967, USA