

Recombinant Full Length Human SOX13 Protein, C-Flag-tagged

Cat. No. SOX13-1811HFL **Lot. No.** (See product label)

SPECIFICATION

Product Overview	Recombinant Full Length Human SOX13 Protein, fused to Flag-tag at C-terminus, was expressed in Mammalian cells.
Species	Human
Source	Mammalian Cells
Description	This gene encodes a member of the SOX (SRY-related HMG-box) family of transcription factors involved in the regulation of embryonic development and in the determination of cell fate. The encoded protein may act as a transcriptional regulator after forming a protein complex with other proteins. It has also been determined to be a type-1 diabetes autoantigen, also known as islet cell antibody 12.
Form	25 mM Tris HCl, pH 7.3, 100 mM glycine, 10% glycerol.
Molecular Mass	69 kDa
AA Sequence	MSMRSPISAQLALDGVGTMVNCTIKSEEKKEPCHEAPQGSATAAEPQPGDPARASQ DSADPQAPAQGNFR GSWDCSSPEGNGSPEPKRPGVSEAASGSQEKLDFNRNLKE VVPAIEKLLSSDWKERFLGRNSMEAKDVKG TQESLAEKELQLLVMIHQLSTLRDQLL TAHSEQKNMAAMLFEKQQQQMELARQQQEQIAKQQQQLIQQQH KINLLQQQIQQV NMPYVMIPAFPPSHQPLPVTTPDSQLALPIQPIPCPKVEYPLQLLHSPAPVVKRPGA M ATHHPLQEPSQPLNLTAKPKAPELPNTSSSPSLKMSSCVPRPPSHGGPTRDLQS SPPSLPLGFLGEGDAV TKAIQDARQLLHSHSGALDGPNTPFKDLISLDSSPAKER

 Tel: 1-631-559-9269 1-516-512-3133

 Email: info@creative-biomart.com  Fax: 1-631-938-8127

 45-1 Ramsey Road, Shirley, NY 11967, USA

LEDGCVHPLEEAMLSCDMDGSRHFPEARN SSHIKRPMNAFMVWAKDERRKILQAF
 PDMHNSSISKILGSRWKSMTNQEKQPYEEQARLSRQHLEKYPD YKYKPRPKRTCI
 VEGKRLRVGEYKALMRTRRQDARQSYVIPPQAGQVQMSSSDVLYPRAAGMPLAQF
 LVE
 HYVPRSLDPNMPVIVNTCSLREEGEGTDDRHSVADGEMYRYSEDEDSEGEKSDG
 ELVVLTDRTRPLEQKLISEEDLAANDILDYKDDDDKV

Purity	> 80% as determined by SDS-PAGE and Coomassie blue staining.
Stability	Stable for 12 months from the date of receipt of the product under proper storage and handling conditions. Avoid repeated freeze-thaw cycles.
Storage	Store at -80 centigrade.
Concentration	>50 ug/mL as determined by microplate BCA method.
Preparation	Recombinant protein was captured through anti-DDK affinity column followed by conventional chromatography steps.
Protein Families	Transcription Factors
Full Length	Full L.

GENE INFORMATION

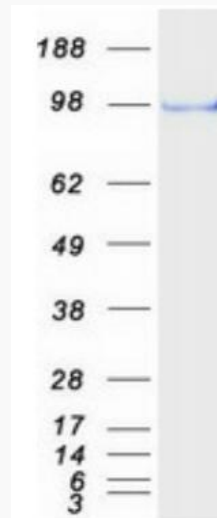
Gene Name	SOX13 SRY-box transcription factor 13 [Homo sapiens (human)]
Official Symbol	SOX13
Synonyms	ICA12; Sox-13

 Tel: 1-631-559-9269 1-516-512-3133

 Email: info@creative-biomart.com  Fax: 1-631-938-8127

 45-1 Ramsey Road, Shirley, NY 11967, USA

Gene ID	9580
mRNA Refseq	NM_005686.3
Protein Refseq	NP_005677.2
MIM	604748
UniProt ID	Q9UN79



Coomassie blue staining of purified SOX13 protein.

Tel: 1-631-559-9269 1-516-512-3133

Email: info@creative-biomart.com Fax: 1-631-938-8127

45-1 Ramsey Road, Shirley, NY 11967, USA