

Recombinant Human SOX13 Protein, Myc/DDK-tagged, C13 and N15-labeled

Cat. No. SOX13-5063H Lot. No. (See product label)

SPECIFICATION

Product Overview

SOX13 MS Standard C13 and N15-labeled recombinant protein (NP_005677) with a C-terminal MYC/DDK tag, was expressed in HEK293 cells.

Species

Human

Source

HEK293

Description

This gene encodes a member of the SOX (SRY-related HMG-box) family of transcription factors involved in the regulation of embryonic development and in the determination of cell fate. The encoded protein may act as a transcriptional regulator after forming a protein complex with other proteins. It has also been determined to be a type-1 diabetes autoantigen, also known as islet cell antibody 12.

Molecular Mass

69 kDa

AA Sequence

MSMRSPISAQLALDGVGTMVNCTIKSEEKKEPCHEAPQGSATAAEPQPGDPARASQ
 DSADPQAPAQGNFRGSWDCSSPEGNGSPEPKRPGVSEAASGSQEKLDFNRNLKE
 VVPAIEKLLSSDWKERFLGRNSMEAKDVKGTQESLAEKELQLLVMIHQLSTLRDQLL
 TAHSEQKNMAAMLFEKQQQQMELARQQQEQIAKQQQQLIQQQHKINLLQQQIQQV
 NMPYVMIPAFPPSHQPLPVTPDSQLALPIQPIPCPKVEYPLQLLHSPAPVVKRPGA
 MATHHPLQEPSQPLNLTAKPKAPELPNTSSSPSLKMSSCVPRPPSHGGPTRDLQSS
 PPSLPLGFLGEGDAVTKAIQDARQLLHSHSGALDGSNPFPFRKDLISLDSSPAKERL
 EDGCVHPLEEAMLSCDMDGSRHFPEsrNSSHIKRPmNAFMVWAKDERRKILQAFP

Tel: 1-631-559-9269 1-516-512-3133

Email: info@creative-biomart.com Fax: 1-631-938-8127

45-1 Ramsey Road, Shirley, NY 11967, USA

DMHNSSISKILGSRWKSMTNQEKPYYEEQARLSRQHLEKYPDYKYKPRPKRTCIV
 EGKRLRVGEYKALMRTRRQDARQSYVIPPQAGQVQMSSSDVLYPRAAGMPLAQPL
 VEHYVPRSLDPNMPVIVNTCSLREEGEGTDDRHSVADGEMYRYSEDEDSEGEKES
 DGELVVLTDRTRPLEQKLISEEDLAANDILDYKDDDDKV

Purity > 80% as determined by SDS-PAGE and Coomassie blue staining

Stability Stable for 3 months from receipt of products under proper storage and handling conditions.

Storage Store at -80 centigrade. Avoid repeated freeze-thaw cycles.

Concentration 50 µg/mL as determined by BCA

Storage Buffer 100 mM glycine, 25 mM Tris-HCl, pH 7.3.

GENE INFORMATION

Gene Name [SOX13 SRY-box transcription factor 13 \[Homo sapiens \(human\) \]](#)

Official Symbol [SOX13](#)

Synonyms SOX13; SRY-box transcription factor 13; transcription factor SOX-13; ICA12; islet cell 12; MGC117216; Sox 13; SRY box 13; SRY related HMG box gene 13; type 1 diabetes autoantigen; SRY-box 13; islet cell antigen 12; SRY-related HMG-box gene 13; type 1 diabetes autoantigen ICA12; Sox-13;

Gene ID [9580](#)

mRNA Refseq [NM_005686](#)

 Tel: 1-631-559-9269 1-516-512-3133

 Email: info@creative-biomart.com  Fax: 1-631-938-8127

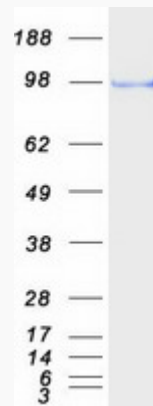
 45-1 Ramsey Road, Shirley, NY 11967, USA

Protein Refseq NP_005677

MIM 604748

UniProt ID Q9UN79

SDS-PAGE



 Tel: 1-631-559-9269 1-516-512-3133

 Email: info@creative-biomart.com  Fax: 1-631-938-8127

 45-1 Ramsey Road, Shirley, NY 11967, USA