

Recombinant Human SOX14 Protein, Myc/DDK-tagged, C13 and N15-labeled

Cat. No. SOX14-6436H Lot. No. (See product label)

SPECIFICATION

Product Overview	SOX14 MS Standard C13 and N15-labeled recombinant protein (NP_004180) with a C-terminal MYC/DDK tag, was expressed in HEK293 cells.
Species	Human
Source	HEK293
Description	This intronless gene encodes a member of the SOX (SRY-related HMG-box) family of transcription factors involved in the regulation of embryonic development and in the determination of the cell fate. The encoded protein may act as a transcriptional regulator after forming a protein complex with other proteins. Mutations in this gene are suggested to be responsible for the limb defects associated with blepharophimosis, ptosis, epicanthus inversus syndrome (BPES) and Mobius syndrome.
Molecular Mass	26.5 kDa
AA Sequence	MSKPSDHIKRP MNAFMVWSRGQRRKMAQENPKMHNSEISKRLGAEWKLLSEAEKRPYIDEAKRLRAQHMKEHPDYKYRPRRKPKNLLKKDRYVFPLPYLGDTDPLKAAGLPVGASDGLLSAPEKARAF LPPASAPYSLLDPAQFSSSAIQKMGEVPHTLATGALPYASTLGYQNGAFGSLSCPSQHTHTHPSP TNP GYV VPCNCTAWSASTLQPPVAYILFPGMTKTGIDPYSSAHATAMSGPTRTRPLEQKLISEEDLAANDILDYKDDDDKV
Purity	> 80% as determined by SDS-PAGE and Coomassie blue staining

 Tel: 1-631-559-9269 1-516-512-3133

 Email: info@creative-biomart.com  Fax: 1-631-938-8127

 45-1 Ramsey Road, Shirley, NY 11967, USA

Stability	Stable for 3 months from receipt of products under proper storage and handling conditions.
Storage	Store at -80 centigrade. Avoid repeated freeze-thaw cycles.
Concentration	50 µg/mL as determined by BCA
Storage Buffer	100 mM glycine, 25 mM Tris-HCl, pH 7.3.

GENE INFORMATION

Gene Name	SOX14 SRY-box transcription factor 14 [Homo sapiens (human)]
Official Symbol	SOX14
Synonyms	SOX14; SRY-box transcription factor 14; transcription factor SOX-14; HMG box transcription factor SOX 14; SOX28; SRY box 14; SRY-box 14; HMG box transcription factor SOX-14; MGC119898; MGC119899;
Gene ID	8403
mRNA Refseq	NM_004189
Protein Refseq	NP_004180
MIM	604747
UniProt ID	O95416

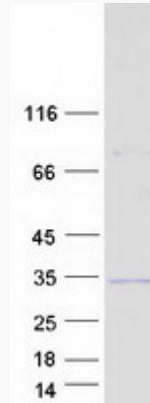
 Tel: 1-631-559-9269 1-516-512-3133

 Email: info@creative-biomart.com  Fax: 1-631-938-8127

 45-1 Ramsey Road, Shirley, NY 11967, USA



SDS-PAGE



Tel: 1-631-559-9269 1-516-512-3133

Email: info@creative-biomart.com Fax: 1-631-938-8127

45-1 Ramsey Road, Shirley, NY 11967, USA