

Recombinant Human SOX15 protein, 61-140AA, C-His-tagged

Cat. No. SOX15-96H Lot. No. (See product label)

SPECIFICATION

Product Overview	Recombinant Human SOX15 protein(O60248)(61-140aa), fused with C-terminal His tag, was expressed in E.coli.
Species	Human
Source	E.coli
Form	0.15 M Phosphate buffered saline
AA Sequence	SAQRRQMAQQNPKMHNSEISKRLGAQWKLLEDEKRPFVEEAKRLRARHLRDYPD YKYRPRRKAKSSGAGPSRCGQGRGN
Storage	2 days when stored at 2 to 8 °C after thawing. Up to 12 months when aliquoted and stored at -20 to -80 °C
Reconstitution	It is recommended that sterile water be added to the vial to prepare a stock solution of 0.2 ug/ul. Centrifuge the vial at 4°C before opening to recover the entire contents.

GENE INFORMATION

Gene Name	SOX15 SRY (sex determining region Y)-box 15 [Homo sapiens]
Official Symbol	SOX15
Synonyms	SOX15; SRY (sex determining region Y)-box 15; SOX20, SRY (sex determining

 Tel: 1-631-559-9269 1-516-512-3133

 Email: info@creative-biomart.com  Fax: 1-631-938-8127

 45-1 Ramsey Road, Shirley, NY 11967, USA

region Y) box 20; protein SOX-15; SOX26; SOX27; SRY (sex determining region Y)-
box 20; SOX20

Gene ID 6665

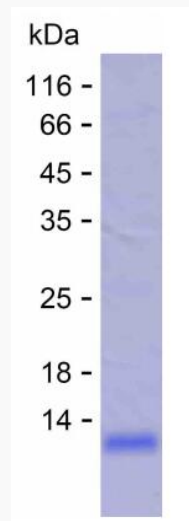
mRNA Refseq NM_006942

Protein Refseq NP_008873

MIM 601297

UniProt ID O60248

SDS-PAGE



 Tel: 1-631-559-9269 1-516-512-3133

 Email: info@creative-biomart.com  Fax: 1-631-938-8127

 45-1 Ramsey Road, Shirley, NY 11967, USA