

# Recombinant Full Length Human SOX2 Protein, C-Flag-tagged

Cat. No. SOX2-1613HFL Lot. No. (See product label)

## SPECIFICATION

<b>Product Overview</b>	Recombinant Full Length Human SOX2 Protein, fused to Flag-tag at C-terminus, was expressed in Mammalian cells.
<b>Species</b>	Human
<b>Source</b>	Mammalian Cells
<b>Description</b>	This intronless gene encodes a member of the SRY-related HMG-box (SOX) family of transcription factors involved in the regulation of embryonic development and in the determination of cell fate. The product of this gene is required for stem-cell maintenance in the central nervous system, and also regulates gene expression in the stomach. Mutations in this gene have been associated with optic nerve hypoplasia and with syndromic microphthalmia, a severe form of structural eye malformation. This gene lies within an intron of another gene called SOX2 overlapping transcript (SOX2OT).
<b>Form</b>	25 mM Tris HCl, pH 7.3, 100 mM glycine, 10% glycerol.
<b>Molecular Mass</b>	34.1 kDa
<b>AA Sequence</b>	MYNMMETELKPPGPQQTSGGGGGNSTAAAAGGNQKNSPDRVKRPMNAFMVWSR GQRRKMAQENPKMHNSE ISKRLGAEWKLLSETEKRPFIDEAKRLRALHMKEHPDY KYRPRRKTTLMKKDKYTLPGGLLAPGGNSMA SGVGVGAGLGAGVNRMDSYAH MNGWSNGSYSMMQDQLGYPQHPGLNAHGAAQMMPHRYDVSALQYNM TSSQ TYMNGSPTYSMSYSQQGTPGMALGSMGVSVKSEASSSPPVVTSSSHSRAPCQAG

 Tel: 1-631-559-9269 1-516-512-3133

 Email: [info@creative-biomart.com](mailto:info@creative-biomart.com)  Fax: 1-631-938-8127

 45-1 Ramsey Road, Shirley, NY 11967, USA

DLRDMISMYLPG  
 AEVPEPAAPSR LHMSQHYQSGPVPGTAINGTLP LSHMTRTRPLEQKLISEEDLAAND  
 ILDYKDDDDKV

**Purity** > 80% as determined by SDS-PAGE and Coomassie blue staining.

**Stability** Stable for 12 months from the date of receipt of the product under proper storage and handling conditions. Avoid repeated freeze-thaw cycles.

**Storage** Store at -80 centigrade.

**Concentration** >50 ug/mL as determined by microplate BCA method.

**Preparation** Recombinant protein was captured through anti-DDK affinity column followed by conventional chromatography steps.

**Protein Families** Adult stem cells, Cancer stem cells, Embryonic stem cells, ES Cell Differentiation/IPS, Induced pluripotent stem cells, Transcription Factors

**Full Length** Full L.

## GENE INFORMATION

**Gene Name** SOX2 SRY-box transcription factor 2 [ Homo sapiens (human) ]

**Official Symbol** SOX2

**Synonyms** ANOP3; MCOPS3

**Gene ID** 6657

 Tel: 1-631-559-9269 1-516-512-3133

 Email: [info@creative-biomart.com](mailto:info@creative-biomart.com)  Fax: 1-631-938-8127

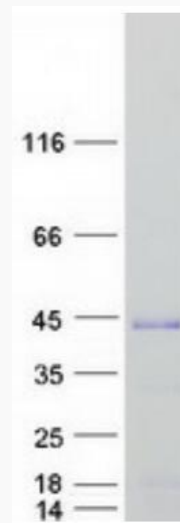
 45-1 Ramsey Road, Shirley, NY 11967, USA

mRNA Refseq [NM\\_003106.4](#)

Protein Refseq [NP\\_003097.1](#)

MIM [184429](#)

UniProt ID [P48431](#)



Coomassie blue staining of purified SOX2 protein.

 Tel: 1-631-559-9269 1-516-512-3133

 Email: [info@creative-biomart.com](mailto:info@creative-biomart.com)  Fax: 1-631-938-8127

 45-1 Ramsey Road, Shirley, NY 11967, USA