

Recombinant Human SOX2 protein, His-tagged

Cat. No. SOX2-6323H Lot. No. (See product label)

SPECIFICATION

Product Overview	Recombinant Human SOX2 protein(P48431)(1-317aa), fused with N-terminal His tag, was expressed in E.coli.
Species	Human
Source	E.coli
ProteinLength	1-317a.a.
Tag	His
Form	If the delivery form is liquid, the default storage buffer is Tris/PBS-based buffer, 5%-50% glycerol. If the delivery form is lyophilized powder, the buffer before lyophilization is Tris/PBS-based buffer, 6% Trehalose, pH 8.0.
Molecular Mass	38.4 kDa
Purity	Greater than 90% as determined by SDS-PAGE.
Storage	Store at -20°C/-80°C upon receipt, aliquoting is necessary for mutiple use. Avoid repeated freeze-thaw cycles.
Reconstitution	We recommend that this vial be briefly centrifuged prior to opening to bring the contents to the bottom. Please reconstitute protein in deionized sterile water to a concentration of 0.1-1.0 mg/mL.We recommend to add 5-50% of glycerol (final

 Tel: 1-631-559-9269 1-516-512-3133

 Email: info@creative-biomart.com  Fax: 1-631-938-8127

 45-1 Ramsey Road, Shirley, NY 11967, USA

concentration) and aliquot for long-term storage at -20°C/-80°C.

AA Sequence

MYNMMETELKPPGPQQTSGGGGGNSTAAAAGGNQKNSPDRVKRPMNAFMVWSR
 GQRRKMAQENPKMHNSEISKRLGAEWKLLSETEKRPFIDEAKRLRALHMKEHPDYK
 YRPRRKTTLMKKDKYTLPGGLLAPGGNSMASGVGVGAGLGAGVNRMDSYAHM
 NGWSNGSYSMMQDQLGYPQHPLNAHGAAQMMPHRYDVSALQYNSMTSSQTY
 MNGSPTYSMSYSQQGTPGMALGSMGSVVKSEASSPPVVTSSSHSRAPCQAGDL
 RDMISMYLPGAEVPEPAAPSRLHMSQHYQSGPVPGTAINGTLPLSHM

GENE INFORMATION

Gene Name [SOX2 SRY \(sex determining region Y\)-box 2 \[Homo sapiens \]](#)

Official Symbol [SOX2](#)

Synonyms [SOX2](#); [SRY \(sex determining region Y\)-box 2](#); [transcription factor SOX-2](#); [transcription factor SOX2](#); [SRY-related HMG-box gene 2](#); [ANOP3](#); [MCOPS3](#); [MGC2413](#);

Gene ID [6657](#)

mRNA Refseq [NM_003106](#)

Protein Refseq [NP_003097](#)

MIM [184429](#)

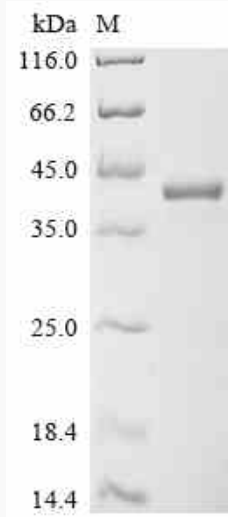
UniProt ID [P48431](#)

 Tel: 1-631-559-9269 1-516-512-3133

 Email: info@creative-biomart.com  Fax: 1-631-938-8127

 45-1 Ramsey Road, Shirley, NY 11967, USA

SDS-PAGE



 Tel: 1-631-559-9269 1-516-512-3133

 Email: info@creative-biomart.com  Fax: 1-631-938-8127

 45-1 Ramsey Road, Shirley, NY 11967, USA