

## Active Recombinant Human SOX2 protein

Cat. No. SOX2-837H Lot. No. (See product label)

### SPECIFICATION

<b>Product Overview</b>	Active Recombinant Human SOX2 protein(P09486)(18-1303 aa) was expressed in E.coli.
<b>Species</b>	Human
<b>Source</b>	E.coli
<b>ProteinLength</b>	18-1303 aa
<b>Form</b>	Lyophilized from a 0.2 µm filtered concentrated solution in PBS, pH 7.4.
<b>Bio-activity</b>	Fully biologically active when compared to standard. The ED50 as determined by its ability to inhibit the cell growth of Mv1Lu mink lung epithelial cells is less than 3.0 µg/mL, corresponding to a specific activity of > 333 IU/mg.
<b>Molecular Mass</b>	Approximately 36.0 kDa, a single non-glycosylated polypeptide chain containing 330 amino acids, including the 317 residues of full-length Sox2 and a 13-residue C-terminal TAT peptide (GGYGRKKRRQRRR).
<b>AASequence</b>	<p>APQQEALPDE TEVVEETVAE VTEVSVGANP VQVEVGEFDD GAEETEEEVV  AENPCQNHHC KHGKVCCELDE NNTPMCVCQD PTSCPAPIGE FEKVCSNDNK  TFDSSCHFFA TKCTLEGTKK GHKLHLDYIG PCKYIPPCLD SELTEFPLRM  RDWLKNVLVT LYERDEDNNL LTEKQQLRVK KIHENEKRLE AGDHPVELLA  RDFEKNYNMY IFPVHWQFGQ LDQHPIDGYL SHTELAPLRA PLIPMEHCTT  RFFETCDLDN DKYIALDEWA GCFGIKQKDI DKDLVI</p>

 Tel: 1-631-559-9269 1-516-512-3133

 Email: [info@creative-biomart.com](mailto:info@creative-biomart.com)  Fax: 1-631-938-8127

 45-1 Ramsey Road, Shirley, NY 11967, USA

<b>Endotoxin</b>	Less than 0.1 EU/μg of rHuSPARC as determined by LAL method.
<b>Purity</b>	>95% by SDS-PAGE and HPLC analyses.
<b>Storage</b>	Use a manual defrost freezer and avoid repeated freeze-thaw cycles. - 12 months from date of receipt, -20 to -70 °C as supplied. - 1 month, 2 to 8 °C under sterile conditions after reconstitution. - 3 months, -20 to -70 °C under sterile conditions after reconstitution.
<b>Reconstitution</b>	We recommend that this vial be briefly centrifuged prior to opening to bring the contents to the bottom. Reconstitute in sterile distilled water or aqueous buffer containing 0.1 % BSA to a concentration of 0.1-1.0 mg/mL. Stock solutions should be apportioned into working aliquots and stored at ≤ -20 °C. Further dilutions should be made in appropriate buffered solutions.

## GENE INFORMATION

<b>Gene Name</b>	SOX2 SRY (sex determining region Y)-box 2 [ Homo sapiens ]
<b>Official Symbol</b>	SOX2
<b>Synonyms</b>	SOX2; SRY (sex determining region Y)-box 2; transcription factor SOX-2; transcription factor SOX2; SRY-related HMG-box gene 2; ANOP3; MCOPS3; MGC2413;
<b>Gene ID</b>	6657
<b>mRNA Refseq</b>	NM_003106
<b>Protein Refseq</b>	NP_003097

 Tel: 1-631-559-9269 1-516-512-3133

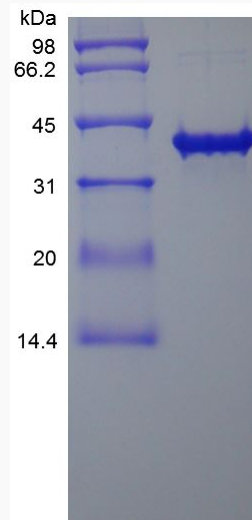
 Email: [info@creative-biomart.com](mailto:info@creative-biomart.com)  Fax: 1-631-938-8127

 45-1 Ramsey Road, Shirley, NY 11967, USA

MIM 184429

UniProt ID P48431

SDS-PAGE



 Tel: 1-631-559-9269 1-516-512-3133

 Email: [info@creative-biomart.com](mailto:info@creative-biomart.com)  Fax: 1-631-938-8127

 45-1 Ramsey Road, Shirley, NY 11967, USA