

# Recombinant Human SOX21 Protein, Myc/DDK-tagged, C13 and N15-labeled

Cat. No. SOX21-2791H Lot. No. (See product label)

## SPECIFICATION

<b>Product Overview</b>	SOX21 MS Standard C13 and N15-labeled recombinant protein (NP_009015) with a C-terminal MYC/DDK tag, was expressed in HEK293 cells.
<b>Species</b>	Human
<b>Source</b>	HEK293
<b>Description</b>	SRY-related HMG-box (SOX) genes encode a family of DNA-binding proteins containing a 79-amino acid HMG (high mobility group) domain that shares at least 50% sequence identity with the DNA-binding HMG box of the SRY protein. SOX proteins are divided into 6 subgroups based on sequence similarity within and outside of the HMG domain. For additional background information on SOX genes.
<b>Molecular Mass</b>	28.4 kDa
<b>AA Sequence</b>	MSKPVDHVKRPMNAFMVWSRAQRRKMAQENPKMHNSEISKRLGAEWKLLTESEK RPFIDEAKRLRAMHMKEHPDYKYRPRRKPKTLLKKDKFAFPVPYGLGGVADAEHPA LKAGAGLHAGAGGGLVPESLLANPEKAAAAAAAAAARVFFPQSAAAAAAAAAAAAA GSPYSLLDLGSKMAEISSSSSGLPYASSLGYPTAGAGAFHGAAAAAAAAAAAAAGGH THSHPSPGNPGYMIPCNCSAWPSPGLQPPLAYILLPGMGKPLDPYPAAYAAALSG PTRTRPLEQKLISEEDLAANDILDYKDDDDKV
<b>Purity</b>	> 80% as determined by SDS-PAGE and Coomassie blue staining

 Tel: 1-631-559-9269 1-516-512-3133

 Email: [info@creative-biomart.com](mailto:info@creative-biomart.com)  Fax: 1-631-938-8127

 45-1 Ramsey Road, Shirley, NY 11967, USA

<b>Stability</b>	Stable for 3 months from receipt of products under proper storage and handling conditions.
<b>Storage</b>	Store at -80 centigrade. Avoid repeated freeze-thaw cycles.
<b>Concentration</b>	50 µg/mL as determined by BCA
<b>Storage Buffer</b>	100 mM glycine, 25 mM Tris-HCl, pH 7.3.

## GENE INFORMATION

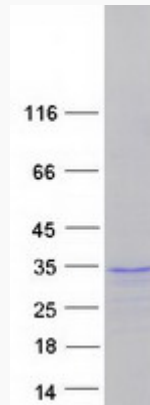
<b>Gene Name</b>	SOX21 SRY-box transcription factor 21 [ Homo sapiens (human) ]
<b>Official Symbol</b>	SOX21
<b>Synonyms</b>	SOX21; SRY-box transcription factor 21; transcription factor SOX-21; SOX25; SRY box 21; SOX-A; SRY-box 21;
<b>Gene ID</b>	11166
<b>mRNA Refseq</b>	NM_007084
<b>Protein Refseq</b>	NP_009015
<b>MIM</b>	604974
<b>UniProt ID</b>	Q9Y651

 Tel: 1-631-559-9269 1-516-512-3133

 Email: [info@creative-biomart.com](mailto:info@creative-biomart.com)  Fax: 1-631-938-8127

 45-1 Ramsey Road, Shirley, NY 11967, USA

**SDS-PAGE**



 Tel: 1-631-559-9269 1-516-512-3133

 Email: [info@creative-biomart.com](mailto:info@creative-biomart.com)  Fax: 1-631-938-8127

 45-1 Ramsey Road, Shirley, NY 11967, USA