

## Recombinant Human SOX5 Protein (Met14-Pro284), N-His tagged

Cat. No. SOX5-6337H Lot. No. (See product label)

### SPECIFICATION

|                         |   |
|-------------------------|---|
| <b>Product Overview</b> | Recombinant human SOX5 (Met14-Pro284) fused with the N-His tag was expressed in E. coli.  |
| <b>Species</b>          | Human   |
| <b>Source</b>           | E.coli  |
| <b>ProteinLength</b>    | Met14-Pro284  |
| <b>Form</b>             | Lyophilized powder/frozen liquid  |
| <b>Molecular Mass</b>   | 32.60 kDa   |
| <b>Purity</b>           | > 90 % as determined by SDS-PAGE  |
| <b>Notes</b>            | For research use only.  |
| <b>Storage</b>          | Use a manual defrost freezer and avoid repeated freeze thaw cycles. Store at 2 to 8 centigrade for one week. Store at -20 to -80 centigrade for twelve months from the date of receipt. |
| <b>Storage Buffer</b>   | 0.01M PBS, pH 7.4, 0.02 % NLS   |
| <b>Reconstitution</b>   | Reconstitute in sterile water for a stock solution.   |

 Tel: 1-631-559-9269 1-516-512-3133

 Email: [info@creative-biomart.com](mailto:info@creative-biomart.com)  Fax: 1-631-938-8127

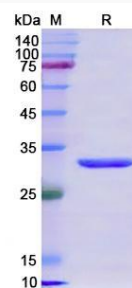
 45-1 Ramsey Road, Shirley, NY 11967, USA

**Shipping** They are shipped out with dry ice/blue ice unless customers require otherwise.

## GENE INFORMATION

|                        |   |
|------------------------|---|
| <b>Gene Name</b>       | SOX5 SRY (sex determining region Y)-box 5 [ Homo sapiens (human) ]                                |
| <b>Official Symbol</b> | SOX5  |
| <b>Synonyms</b>        | SOX5; SRY (sex determining region Y)-box 5; transcription factor SOX-5; L SOX5; MGC35153; L-SOX5; |
| <b>Gene ID</b>         | 6660  |
| <b>mRNA Refseq</b>     | NM_006940   |
| <b>Protein Refseq</b>  | NP_008871   |
| <b>MIM</b>             | 604975  |
| <b>UniProt ID</b>      | P35711  |

### SDS-PAGE



Tel: 1-631-559-9269 1-516-512-3133

Email: [info@creative-biomart.com](mailto:info@creative-biomart.com) Fax: 1-631-938-8127

45-1 Ramsey Road, Shirley, NY 11967, USA