

Recombinant Pan-species (General) SPA Protein, His-tagged

Cat. No. SPA-2765P Lot. No. (See product label)

SPECIFICATION

Product Overview	Recombinant Pan-species (General) SPA Protein (Thr31-Pro334) with a N-His tag was expressed in E. coli.
Species	Pan-species
Source	E.coli
ProteinLength	Thr31-Pro334
Description	Staphylococcal protein A (SpA) is a cell-wall-bound pathogenicity factor from the bacterium Staphylococcus aureus. Because of their small size and immunoglobulin (IgG)-binding activities, domains of protein A are targets for protein engineering efforts and for the development of computational approaches for de novo protein folding.
Form	Freeze-dried powder
Molecular Mass	Predicted Molecular Mass: 35.46 kDa Accurate Molecular Mass: 35 kDa
Purity	> 90%
Stability	The thermal stability is described by the loss rate. The loss rate was determined by accelerated thermal degradation test, that is, incubate the protein at 37 centigrade for 48h, and no obvious degradation and precipitation were observed. The loss rate is

 Tel: 1-631-559-9269 1-516-512-3133

 Email: info@creative-biomart.com  Fax: 1-631-938-8127

 45-1 Ramsey Road, Shirley, NY 11967, USA

less than 5% within the expiration date under appropriate storage condition.

Storage

Avoid repeated freeze/thaw cycles. Store at 2-8 centigrade for one month. Aliquot and store at -80 centigrade for 12 months.

Storage Buffer

20mM Tris, 150mM NaCl, pH8.0, containing 1mM EDTA, 1mM DTT, 0.01% SKL, 5% Trehalose and Proclin300.

Reconstitution

Reconstitute in 20mM Tris, 150mM NaCl (pH8.0) to a concentration of 0.1-1.0 mg/mL. Do not vortex.

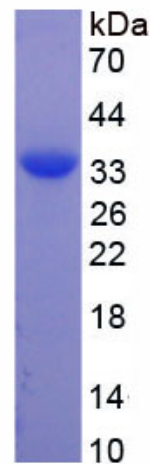
GENE INFORMATION

Official Symbol

SPA

Synonyms

Staphylococcal Protein A; SPA; PEA1



 Tel: 1-631-559-9269 1-516-512-3133

 Email: info@creative-biomart.com  Fax: 1-631-938-8127

 45-1 Ramsey Road, Shirley, NY 11967, USA