

Recombinant Human SPAG1 Protein (Met1-Lys365), N-His tagged

Cat. No. SPAG1-5474H Lot. No. (See product label)

SPECIFICATION

Product Overview

Recombinant human SPAG1 (Met1-Lys365) fused with the N-His tag was expressed in E. coli.

Species

Human

Source

E.coli

ProteinLength

Met1-Lys365

Description


The correlation of anti-sperm antibodies with cases of unexplained infertility implicates a role for these antibodies in blocking fertilization. Improved diagnosis and treatment of immunologic infertility, as well as identification of proteins for targeted contraception, are dependent on the identification and characterization of relevant sperm antigens. The protein expressed by this gene is recognized by anti-sperm agglutinating antibodies from an infertile woman. Furthermore, immunization of female rats with the recombinant human protein reduced fertility. This protein localizes to the plasma membrane of germ cells in the testis and to the post-acrosomal plasma membrane of mature spermatozoa. Recombinant polypeptide binds GTP and exhibits GTPase activity. Thus, this protein may regulate GTP signal transduction pathways involved in spermatogenesis and fertilization. Two transcript variants of this gene encode the same protein.

Form

Lyophilized powder/frozen liquid

 Tel: 1-631-559-9269 1-516-512-3133

 Email: info@creative-biomart.com  Fax: 1-631-938-8127

 45-1 Ramsey Road, Shirley, NY 11967, USA

Molecular Mass	44.23 kDa
Purity	> 90 % as determined by SDS-PAGE
Notes	For research use only.
Storage	Use a manual defrost freezer and avoid repeated freeze thaw cycles. Store at 2 to 8 centigrade for one week. Store at -20 to -80 centigrade for twelve months from the date of receipt.
Storage Buffer	0.01M PBS, pH 7.4, 0.02 % NLS
Reconstitution	Reconstitute in sterile water for a stock solution.
Shipping	They are shipped out with dry ice/blue ice unless customers require otherwise.

GENE INFORMATION

Gene Name	SPAG1 sperm associated antigen 1 [Homo sapiens (human)]
Official Symbol	SPAG1
Synonyms	SPAG1; sperm associated antigen 1; SP75; TPIS; CT140; CILD28; DNAAF13; HSD-3.8; HEL-S-268; sperm-associated antigen 1; TPR-containing protein involved in spermatogenesis; dynein axonemal assembly factor 13; epididymis secretory protein Li 268; infertility-related sperm protein Spag-1; tetratricopeptide repeat-containing protein
Gene ID	6674
mRNA Refseq	NM_001374321

 Tel: 1-631-559-9269 1-516-512-3133

 Email: info@creative-biomart.com  Fax: 1-631-938-8127

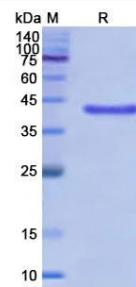
 45-1 Ramsey Road, Shirley, NY 11967, USA

Protein Refseq NP_001361250

MIM 603395

UniProt ID Q07617

SDS-PAGE



 Tel: 1-631-559-9269 1-516-512-3133

 Email: info@creative-biomart.com  Fax: 1-631-938-8127

 45-1 Ramsey Road, Shirley, NY 11967, USA