

Recombinant Human SPAG11B Protein, Myc/DDK-tagged, C13 and N15-labeled

Cat. No. SPAG11B-2872H **Lot. No.** (See product label)

SPECIFICATION

Product Overview	SPAG11B MS Standard C13 and N15-labeled recombinant protein (NP_478108) with a C-terminal MYC/DDK tag, was expressed in HEK293 cells.
Species	Human
Source	HEK293
Description	This gene encodes several androgen-dependent, epididymis-specific secretory proteins. The specific functions of these proteins have not been determined, but they are thought to be involved in sperm maturation. Some of the isoforms contain regions of similarity to beta-defensins, a family of antimicrobial peptides. The gene is located on chromosome 8p23 near the defensin gene cluster. Alternative splicing of this gene results in seven transcript variants encoding different isoforms. Two different N-terminal and five different C-terminal protein sequences are encoded by the splice variants. Two additional variants have been described, but their full length sequences have not been determined.
Molecular Mass	12.1 kDa
AA Sequence	MRQRLLPSVTSLLLVALLPFGSSQARHVNHSATEALGELRERAPGQGTNGFQLLRH AVKRDLLPPRTPPYQGDVPPGIRNTICRMQQGICRLFFCHSGEKKRDICSDPWNR CVSNTDEEGKEKPEMDGRSGITRTRPLEQKLISEEDLAANDILDYKDDDDKV
Purity	> 80% as determined by SDS-PAGE and Coomassie blue staining

 Tel: 1-631-559-9269 1-516-512-3133

 Email: info@creative-biomart.com  Fax: 1-631-938-8127

 45-1 Ramsey Road, Shirley, NY 11967, USA

Stability	Stable for 3 months from receipt of products under proper storage and handling conditions.
Storage	Store at -80 centigrade. Avoid repeated freeze-thaw cycles.
Concentration	50 µg/mL as determined by BCA
Storage Buffer	100 mM glycine, 25 mM Tris-HCl, pH 7.3.

GENE INFORMATION

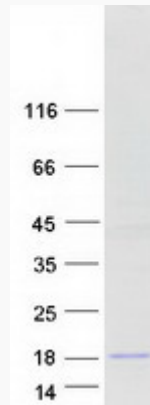
Gene Name	SPAG11B sperm associated antigen 11B [Homo sapiens (human)]
Official Symbol	SPAG11B
Synonyms	SPAG11B; sperm associated antigen 11B; sperm-associated antigen 11B; EDDM2B; EP2; EP2C; EP2D; epididymal protein 2B; HE2; sperm antigen HE2; human epididymis-specific protein 2; HE2C; SPAG11; MGC61846;
Gene ID	10407
mRNA Refseq	NM_058201
Protein Refseq	NP_478108
MIM	606560
UniProt ID	Q08648

 Tel: 1-631-559-9269 1-516-512-3133

 Email: info@creative-biomart.com  Fax: 1-631-938-8127

 45-1 Ramsey Road, Shirley, NY 11967, USA

SDS-PAGE



 Tel: 1-631-559-9269 1-516-512-3133

 Email: info@creative-biomart.com  Fax: 1-631-938-8127

 45-1 Ramsey Road, Shirley, NY 11967, USA