

Recombinant Human SPAG16 Protein, Myc/DDK-tagged, C13 and N15-labeled

Cat. No. SPAG16-1615H **Lot. No.** (See product label)

SPECIFICATION

Product Overview	SPAG16 MS Standard C13 and N15-labeled recombinant protein (NP_001020607) with a C-terminal MYC/DDK tag, was expressed in HEK293 cells.
Species	Human
Source	HEK293
Description	Cilia and flagella are comprised of a microtubular backbone, the axoneme, which is organized by the basal body and surrounded by plasma membrane. SPAG16 encodes 2 major proteins that associate with the axoneme of sperm tail and the nucleus of postmeiotic germ cells, respectively.
Molecular Mass	20.4 kDa
AA Sequence	MAAQRGMPSSAVRVLEEALGMGLTAAGDARDTADAVAAEGAYYLEQVTITEASEDD YEYEEIPDDNFSIPEGEEDLAKAIQMAQEQTDTTEILERKTVLPSKHAVPEVIEDFLCN FLIKMGMTRTLDCFQSEWYELIQKGVTELRTVGNVDPVYTQIMLLENENKNLKKDLK HYKQAAEYVIFTRTRPLEQKLISEEDLAANDILDYKDDDDKV
Purity	> 80% as determined by SDS-PAGE and Coomassie blue staining
Stability	Stable for 3 months from receipt of products under proper storage and handling conditions.

 Tel: 1-631-559-9269 1-516-512-3133

 Email: info@creative-biomart.com  Fax: 1-631-938-8127

 45-1 Ramsey Road, Shirley, NY 11967, USA

Storage	Store at -80 centigrade. Avoid repeated freeze-thaw cycles.
Concentration	50 µg/mL as determined by BCA
Storage Buffer	100 mM glycine, 25 mM Tris-HCl, pH 7.3.
GENE INFORMATION	
Gene Name	SPAG16 sperm associated antigen 16 [Homo sapiens (human)]
Official Symbol	SPAG16
Synonyms	SPAG16; sperm associated antigen 16; sperm-associated antigen 16 protein; DKFZp666P1710; FLJ22724; PF20; WDR29; WD repeat domain 29; pf20 protein homolog; sperm-associated WD repeat protein; FLJ37717; MGC87036;
Gene ID	79582
mRNA Refseq	NM_001025436
Protein Refseq	NP_001020607
MIM	612173
UniProt ID	Q8N0X2

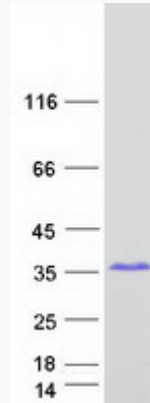
 Tel: 1-631-559-9269 1-516-512-3133

 Email: info@creative-biomart.com  Fax: 1-631-938-8127

 45-1 Ramsey Road, Shirley, NY 11967, USA



SDS-PAGE



Tel: 1-631-559-9269 1-516-512-3133

Email: info@creative-biomart.com Fax: 1-631-938-8127

45-1 Ramsey Road, Shirley, NY 11967, USA