

Recombinant Human SPAG16 protein, His-tagged

Cat. No. SPAG16-2892H **Lot. No.** (See product label)

SPECIFICATION

Product Overview	Recombinant Human SPAG16 protein(1-181 aa), fused with N-terminal His tag, was expressed in E. coli.
Species	Human
Source	E.coli
ProteinLength	1-181 aa
Form	The purified protein was Lyophilized from sterile PBS (58mM Na ₂ HPO ₄ , 17mM NaH ₂ PO ₄ , 68mM NaCl, pH7.4). 5 % trehalose and 5 % mannitol are added as protectant before lyophilization.
Storage	Short-term storage: Store at 2-8°C for (1-2 weeks). Long-term storage: Aliquot and store at -20°C to -80°C for up to 3 months, reconstitution with sterile water and addition of an equal volume of glycerol. Avoid repeat freeze-thaw cycles.
AA Sequence	MAAQRGMPSSAVRVLEEALGMGLTAAGDARDTADAVAAEGAYYLEQVTITEASEDD YEYEEIPDDNFSIPEGEEDLAKAIQMAQEQTDTTEILERKTVLPSKHAVPEVIEDFLCN FLIKMGMTRTLDCFQSEWYELIQKGVTELRTVGNVPDVYTYQIMLLENENKNLKKDLK HYKQAAEYV
Purity	90%, by SDS-PAGE with Coomassie Brilliant Blue staining.

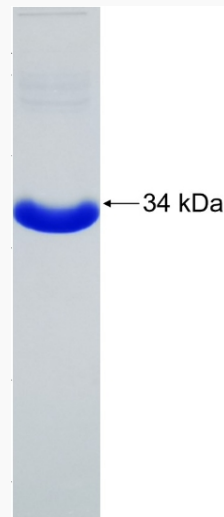
GENE INFORMATION

 Tel: 1-631-559-9269 1-516-512-3133

 Email: info@creative-biomart.com  Fax: 1-631-938-8127

 45-1 Ramsey Road, Shirley, NY 11967, USA

Official Symbol	SPAG16
Synonyms	SPAG16; sperm associated antigen 16; sperm-associated antigen 16 protein; DKFZp666P1710; FLJ22724; PF20; WDR29; WD repeat domain 29; pf20 protein homolog; sperm-associated WD repeat protein; FLJ37717; MGC87036;
Gene ID	79582
mRNA Refseq	NM_001025436
Protein Refseq	NP_001020607
MIM	612173
UniProt ID	Q8N0X2

SDS-PAGE

 Tel: 1-631-559-9269 1-516-512-3133

 Email: info@creative-biomart.com  Fax: 1-631-938-8127

 45-1 Ramsey Road, Shirley, NY 11967, USA