

Recombinant Human SPAG16 Protein, Myc/DDK-tagged, C13 and N15-labeled

Cat. No. SPAG16-989H Lot. No. (See product label)

SPECIFICATION

Product Overview	SPAG16 MS Standard C13 and N15-labeled recombinant protein (NP_078808) with a C-terminal MYC/DDK tag, was expressed in HEK293 cells.
Species	Human
Source	HEK293
Description	Cilia and flagella are comprised of a microtubular backbone, the axoneme, which is organized by the basal body and surrounded by plasma membrane. SPAG16 encodes 2 major proteins that associate with the axoneme of sperm tail and the nucleus of postmeiotic germ cells, respectively.
Molecular Mass	70.6 kDa
AA Sequence	<p>MAAQRGMPSSAVRVLEEALGMGLTAAGDARDTADAVAAEGAYYLEQVTITEASEDD YEYEEIPDDNFSIPEGEEDLAKAIQMAQEATDTEILERKTVLPSKHAVPEVIEDFLCN FLIKMGMTRTLDCFQSEWYELIQKGVTELRTVGNVPDVYTQIMLLENENKNLKKDLK HYKQAADKAREDLLKIQKERDFHRMHHKRIVQEKNKLINDLKGLKLHYASYEPTIRVL HEKHHTLLKEKMLTSLERDKVVGQISGLQETLKKLQRGHSYHGPIKVDHSREKENA PEGPTQKGLREAREQNKCKTKMKGNTKDSEFPIDMQPNPNLNVSKESLSPAKFDYK LKNIFRLHELPVSCVSMQPHKDILVSCGEDRLWKVGLPKCNVLLTGFGHTDWLSDC CFHPSGDKLATSSGDTTVKLWDLCKGDCILTFEGHSRAVWSCTWHSCGNFVASSS LDKTSKIWDVNSERCRCRTLYGHTDSVNSIEFFPFSNTLLTSSADKTL SIWDARTGICE</p>

Tel: 1-631-559-9269 1-516-512-3133

Email: info@creative-biomart.com Fax: 1-631-938-8127

45-1 Ramsey Road, Shirley, NY 11967, USA

QSLYGHMHSINDAIFDPRGHMIASCDACGVTKLWDFRKLLPIVSIIDIGPSPGNEVNFD
 SSGRVLAQASNGNGVIHLLDLKSGEIHKLMGHENEAHHTVVFSHDGEILFSGGSDGTVR
 TWSTRTRPLEQKLISEEDLAANDILDYKDDDDKV

Purity > 80% as determined by SDS-PAGE and Coomassie blue staining

Stability Stable for 3 months from receipt of products under proper storage and handling conditions.

Storage Store at -80 centigrade. Avoid repeated freeze-thaw cycles.

Concentration 50 µg/mL as determined by BCA

Storage Buffer 100 mM glycine, 25 mM Tris-HCl, pH 7.3.

GENE INFORMATION

Gene Name SPAG16 sperm associated antigen 16 [Homo sapiens (human)]

Official Symbol SPAG16

Synonyms SPAG16; sperm associated antigen 16; sperm-associated antigen 16 protein; DKFZp666P1710; FLJ22724; PF20; WDR29; WD repeat domain 29; pf20 protein homolog; sperm-associated WD repeat protein; FLJ37717; MGC87036;

Gene ID 79582

mRNA Refseq NM_024532

Protein Refseq NP_078808

 Tel: 1-631-559-9269 1-516-512-3133

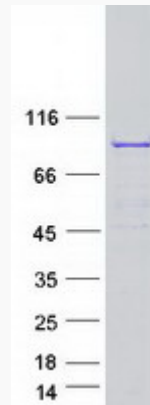
 Email: info@creative-biomart.com  Fax: 1-631-938-8127

 45-1 Ramsey Road, Shirley, NY 11967, USA

MIM 612173

UniProt ID Q8N0X2

SDS-PAGE



 Tel: 1-631-559-9269 1-516-512-3133

 Email: info@creative-biomart.com  Fax: 1-631-938-8127

 45-1 Ramsey Road, Shirley, NY 11967, USA