

Recombinant Full Length Human SPAG5 Protein, C-Flag-tagged

Cat. No. SPAG5-1643HFL **Lot. No.** (See product label)

SPECIFICATION

Product Overview	Recombinant Full Length Human SPAG5 Protein, fused to Flag-tag at C-terminus, was expressed in Mammalian cells.
Species	Human
Source	Mammalian Cells
Description	This gene encodes a protein associated with the mitotic spindle apparatus. The encoded protein may be involved in the functional and dynamic regulation of mitotic spindles.
Form	25 mM Tris HCl, pH 7.3, 100 mM glycine, 10% glycerol.
Molecular Mass	134.2 kDa
AA Sequence	MWRVKKLSLSLSPSPQTGKPSMRTPLRELTLPQALNSGKRSPACSSLTPSLCKL GLQEGSNSSPVDF VNNKRTDLSSEHFSSHWLETCQHESEDEQPLDPIPIQISSTP KTSEEAVDPLGNMVKTIIVLPSPLGQQ QDMIFEARLDTMAETNSISLNGPLRTDDL VREEVAPCMGDRFSEVAAVSEKPIFQESPSHLLSEPPNPC SEQLHCSKESLSSRT EAVREDLVPSESNAPLPSVWLWSPSTALAADFRVNHVDPEEEIVEHGAMEEREM R FPTHPKESETEDQALVSSVEDILSTCLTPNLVEMESQEAPGPAVEDVGRILGSDTES WMSPLAWLEKGV NTSVMLENLRQSLSLPSMLRDAAIGTTPFSTCSVGTWFTPSAP QEKSTNTSQTGLVGTKHSTSETEQLLC GRPPDLTALSRHDLEDNLLSSLVILEVLSR QLRDWKSQAVPHPETQDSSTQTDTS HSGITNKLQHLKES HEMGQALQQARNVM

 Tel: 1-631-559-9269 1-516-512-3133

 Email: info@creative-biomart.com  Fax: 1-631-938-8127

 45-1 Ramsey Road, Shirley, NY 11967, USA



QSWVLISKELISLLHLSLLHLEEDKTTVSQESRRAETLVCCCFDLLKLRACLQSL KA
 EREEARHREEMALRGKDAAEIVLEAFCAHASQRISQLEQDLASMPREFRGLLKDAQT
 QLVGLHAKQEEL VQQTVSLTSTLQQDWRSMLDYTTWTALLSRSRQLTEKLTVKS
 QQALQERDVAIEEKQEVSRVLEQVSAQ LEECKGQTEQLELENSRLATDLRAQLQIL
 ANMDSQLKELQSQHTHCAQDLAMKDELLCQLTQSNEEQAAQ WQKEEMALKHMQA
 ELQQQAVLAKEVRDLKETLEFADQENQVAHLELGQVECQLKTTLEVLRRSLQCE
 N LKDTVENLTAKLASTIADNQEQLKTRQYSQKLGLLQSLTLFLQTKLKEKTE
 QETLLLSTACPPT QEHLPLNDRFTFLGSILTAVADEEPESTPVPLLGSDKSAFTRVAS
 MVSLQPAETPGMEESLAEMSIMTTEL QSLCSLLQESKEEAIRTLQRKICELQARLQA
 QEEQHQEVQKAKEADIEKLNQALCLRYKNEKELQEVIQQ QNEKILEQIDKSGELISLR
 EEVTHLTRSLRRAETETKVLQEALAGQLDSNCQPMATNWIQEKVWLSQEVD KLRV
 MFLEMKNEKEKLMIKFQSHRNILEENLRRSDKELEKLDIVQHIYKTLLSIPEVVRGCK
 ELQGLLE
 FLSTRTRPLEQKLISEEDLAANDILDYKDDDDKV

Purity	> 80% as determined by SDS-PAGE and Coomassie blue staining.
Stability	Stable for 12 months from the date of receipt of the product under proper storage and handling conditions. Avoid repeated freeze-thaw cycles.
Storage	Store at -80 centigrade.
Concentration	>50 ug/mL as determined by microplate BCA method.
Preparation	Recombinant protein was captured through anti-DDK affinity column followed by conventional chromatography steps.
Protein Families	Druggable Genome, Stem cell - Pluripotency
Full Length	Full L.

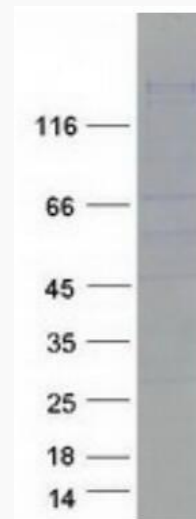
Tel: 1-631-559-9269 1-516-512-3133

Email: info@creative-biomart.com Fax: 1-631-938-8127

45-1 Ramsey Road, Shirley, NY 11967, USA

GENE INFORMATION

Gene Name	SPAG5 sperm associated antigen 5 [Homo sapiens (human)]
Official Symbol	SPAG5
Synonyms	MAP126; DEEPEST; hMAP126
Gene ID	10615
mRNA Refseq	NM_006461.4
Protein Refseq	NP_006452.3
MIM	615562
UniProt ID	Q96R06



Tel: 1-631-559-9269 1-516-512-3133

Email: info@creative-biomart.com Fax: 1-631-938-8127

45-1 Ramsey Road, Shirley, NY 11967, USA



Coomassie blue staining of purified SPAG5 protein.

 Tel: 1-631-559-9269 1-516-512-3133

 Email: info@creative-biomart.com  Fax: 1-631-938-8127

 45-1 Ramsey Road, Shirley, NY 11967, USA