

## Active Recombinant Human SPAM1 protein, Fc-tagged

Cat. No. SPAM1-1530H Lot. No. (See product label)

### SPECIFICATION

<b>Product Overview</b>	Recombinant Human SPAM1 protein, fused with Fc tag, was expressed in CHO.
<b>Species</b>	Human
<b>Source</b>	CHO
<b>Form</b>	PBS
<b>Bio-activity</b>	61000 U/MI
<b>Molecular Mass</b>	≈76.17 kDa (monomer)

#### AA Sequence

LNFRAPPVIPNVPFLWAWNAPSEFCLGKFDEPLDMSLFSFIGSPRINATGQGVTIFYV  
DRLGYYPYIDSITGVTVNGGIPQKISLQDHLDKAKKDITFYMPVDNLGMAVIDWEEWR  
PTWARNWPKDVYKNRSIELVQQQNVQLSLTEATEKAKQEFEKAGKDFLVETIKLG  
KLLRPNHLWGYYLFPDCYNHHYKKPGYNGSCFNVEIKRNDLDSWLWNESTALYPSI  
YLNTQQSPVAATLYVRNRVREAIRVSKIPDAKSPLPVFAYTRIVFTDQVLKFLSQDEL  
VYTFGETVALGASGIVIWGTLSIMRSMKSCLLLDNYMETILNPYIINVTLAAKMCSQVL  
CQEQQVCIRKNWNSSDYHLHLPDNFAIQLEKGGKFTVRGKPTLEDLEQFSEKFYCS  
CYSTLSCKEKADVKDTDAVDVCIADGVCIDAFLKPPMETEEPQIFYVECPPCPAPPV  
AGPSVFLFPPKPKDTLMISRTPEVTCVVVDVSHEDPEVQFNWYVDGVEVHNAKTKP  
REEQFNSTFRVSVLTVVHQDWLNGKEYKCKVSNKGLPAPIEKTISKTKGQPREPQ  
VYTLPPSREEMTKNQVSLTCLVKGFYPSDIAVEWESNGQPENNYKTTTPMLDSDGS  
FFLYSKLTVDKSRWQQGNVFCFSVMHEALHNHYTQKSLSLSPGK

 Tel: 1-631-559-9269 1-516-512-3133

 Email: [info@creative-biomart.com](mailto:info@creative-biomart.com)  Fax: 1-631-938-8127

 45-1 Ramsey Road, Shirley, NY 11967, USA

<b>Endotoxin</b>	<1EU/ml
<b>Storage</b>	-20°C or below
<b>Reconstitution</b>	It is recommended to reconstitute the lyophilized powder in sterile water to 100-200 ug/ml, and further dilute with other solvents. The dissolved protein can be stored at 4°C for 2-7 days and should be used up as soon as possible. If not in use for a short time, please store at -20°C.

## GENE INFORMATION

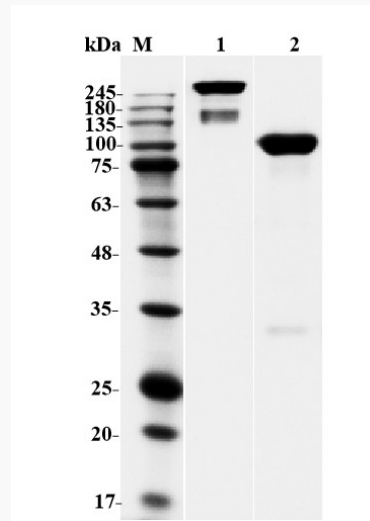
<b>Gene Name</b>	SPAM1 sperm adhesion molecule 1 (PH-20 hyaluronidase, zona pellucida binding) [ Homo sapiens ]
<b>Official Symbol</b>	SPAM1
<b>Synonyms</b>	SPAM1; HYA1; PH20; HYAL1; HYAL3; HYAL5; PH-20; SPAG15; MGC26532; hyaluronidase PH-20; hyal-PH20; OTTHUMP00000211901; OTTHUMP00000211902; OTTHUMP00000211952; sperm surface protein PH-20; hyaluronoglucosaminidase PH-20
<b>Gene ID</b>	6677
<b>mRNA Refseq</b>	NM_001174044
<b>Protein Refseq</b>	NP_001167515
<b>MIM</b>	600930
<b>UniProt ID</b>	P38567

 Tel: 1-631-559-9269 1-516-512-3133

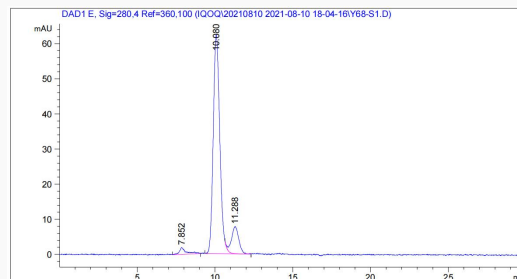
 Email: [info@creative-biomart.com](mailto:info@creative-biomart.com)  Fax: 1-631-938-8127

 45-1 Ramsey Road, Shirley, NY 11967, USA

**SDS-PAGE**



**HPLC**



 Tel: 1-631-559-9269 1-516-512-3133

 Email: [info@creative-biomart.com](mailto:info@creative-biomart.com)  Fax: 1-631-938-8127

 45-1 Ramsey Road, Shirley, NY 11967, USA