

Recombinant Mouse SPAM1 Protein, Full Length

Cat. No. SPAM1-15816M Lot. No. (See product label)

SPECIFICATION

Product Overview	Recombinant Mouse SPAM1 Protein (Full Length) without tag was expressed in HEK293.
Species	Mouse
Source	HEK293
Protein Length	Full Length
Description	Enables hyaluronoglucosaminidase activity. Acts upstream of or within single fertilization. Located in acrosomal vesicle; external side of plasma membrane; and membrane raft. Orthologous to human SPAM1 (sperm adhesion molecule 1).
Molecular Mass	~ 58 kDa
AA Sequence	<p>MGELRFKHLFWGSFVESGGTFQTVLIFLLIPCSLTVDYRAAPILSNTTFLWIWNPTE RCVGNVNDPIDLSFFSLIGSPRKTATGQPVTLFYVDRLGLYPHIDANQAEHYGGIPQR GDYQAHLRKAKTDIEHYIPDDKLGLAIDWEEWRPTWLRNWKPKDNYRNKSIELVQS TNPGLSITEATQKAIQQFEEAGRKFMEGTLHLGKFLRPNQLWGYLLFPDCYNNKFQ DPKYDGGQCPAVEKKRNDNLKWLWKASTGLYPSVYLKDKLSNRQATLYVRYRVVE AIRVSKVGNASDPVPIFVYIRLVFTDRTSEYLLLEDDLVTIGEIVALGTSGIIWDAMSLA QRAAGCPILHKYMQTTLNPIYIVNVTAAKMCSQTLKNEKGMCSRRKESSDVYLHLN PSHFDIMLTETGKYEVVLGNPRVGDLEYFSEHFKCSCFSRMTCKETS DVKNVQDVNV CVGDNVCIKAKVEPNPAFYLLPGKSLLFMTTLGHVLYHLPQDIFVFPRKTLVSTP</p>

 Tel: 1-631-559-9269 1-516-512-3133

 Email: info@creative-biomart.com  Fax: 1-631-938-8127

 45-1 Ramsey Road, Shirley, NY 11967, USA

Endotoxin	< 1 EU/μg protein by LAL
Purity	> 85% as determined by SDS-PAGE
Storage	Store it under sterile conditions at -20 to -80 centigrade. It is recommended that the protein be aliquoted for optimal storage. Avoid repeated freeze-thaw cycles.
Concentration	0.3 mg/mL
Storage Buffer	Supplied as a 0.2 μm filtered solution in PBS (pH 7.4)

GENE INFORMATION

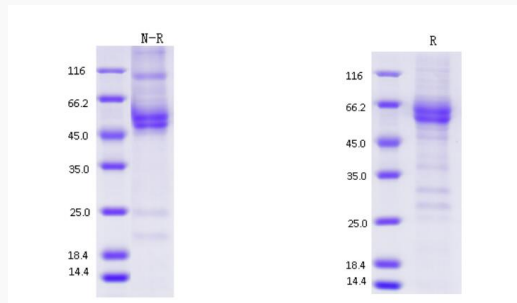
Gene Name	Spam1 sperm adhesion molecule 1 [<i>Mus musculus</i> (house mouse)]
Official Symbol	SPAM1
Synonyms	SPAM1; sperm adhesion molecule 1; hyaluronidase PH-20; hyal-PH20; sperm surface protein PH-20; hyaluronoglucosaminidase PH-20; Ph-20; AV039194
Gene ID	20690
mRNA Refseq	NM_001079875
Protein Refseq	NP_001073344
UniProt ID	P48794

 Tel: 1-631-559-9269 1-516-512-3133

 Email: info@creative-biomart.com  Fax: 1-631-938-8127

 45-1 Ramsey Road, Shirley, NY 11967, USA

**SDS-PAGE analysis
of purified SPAM1**



 Tel: 1-631-559-9269 1-516-512-3133

 Email: info@creative-biomart.com  Fax: 1-631-938-8127

 45-1 Ramsey Road, Shirley, NY 11967, USA