

# Active Recombinant Human SPAM1 / PH20 / Hyaluronidase protein, Tag Free

**Cat. No.** SPAM1-P1004H    **Lot. No.** (See product label)

## SPECIFICATION

<b>Product Overview</b>	Active Recombinant Human SPAM1 / PH20 / Hyaluronidase protein was expressed in CHO.
<b>Species</b>	Human
<b>Source</b>	CHO
<b>Form</b>	Liquid in sterile 20mM PB, 300mM NaCl, 0.1mM EDTA, 0.1mM CaCl <sub>2</sub> , pH6.8.
<b>Bio-activity</b>	The activity of Human Hyaluronidase is measured by its ability to hydrolyze HA in turbidimetric assay. The specific activity is 53,200 IU/mg. (Unit definition: One unit will cause a change in A600nm of 0.330 per minute at pH 5.7 at 37 °C.)
<b>Molecular Mass</b>	The protein has a calculated MW of 51 kDa. The protein migrates as 60 kDa under reducing condition (SDS-PAGE) due to glycosylation.
<b>AA Sequence</b>	<p>LNFRAPPVIPNPFLWAWNAPSEFCLGKFDEPLDMSLFSFIGSPRINATGQGVTIFYV  DRLGYYPYIDSITGVTVNGGIPQKISLQDHLDKAKKDITFYMPVDNLGMAVIDWEEWR  PTWARNWKPKDVYKNRSIELVQQQNVQLSLTEATEKAKQEFEKAGKDFLVETIKLG  KLLRPNHLWGYLFPDCYNHHYKPKGYNGSCFNVEIKRNDLDSWLWNESTALYPSI  YLNTQQSPVAATLYVRNRVREAIRVSKIPDAKSPLPVFAYTRIVFTDQVLKFLSQDEL  VYTFGETVALGASGIVIWGTLSIMRSMKSCLLLDNYMETILNPYIINVTLAAKMCSQVL  CQEQQVCIRKNWNSSDYLHLNPDNFAIQLEKGGKFTVRGKPTLEDLEQFSEKFYCS  CYSTLSCKEKADVKDTDAVDVCIADGVCIDAFLKPPMETEEPQIFY</p>

 Tel: 1-631-559-9269    1-516-512-3133

 Email: [info@creative-biomart.com](mailto:info@creative-biomart.com)     Fax: 1-631-938-8127

 45-1 Ramsey Road, Shirley, NY 11967, USA

<b>Endotoxin</b>	< 0.1 EU per µg of the protein as determined by the LAL method.
<b>Purity</b>	> 95% as determined by SDS-PAGE. > 95% as determined by SEC-HPLC.
<b>Storage</b>	Store it under sterile conditions at -20 to -80 °C. It is recommended that the protein be aliquoted for optimal storage. Avoid repeated freeze-thaw cycles.
<b>Concentration</b>	0.5mg/ml.

## GENE INFORMATION

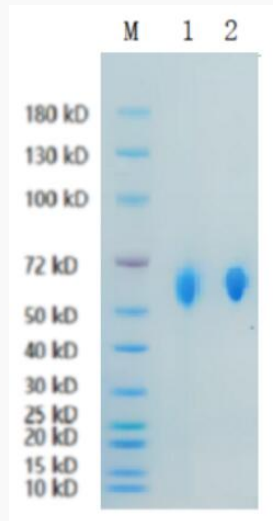
<b>Gene Name</b>	SPAM1 sperm adhesion molecule 1 (PH-20 hyaluronidase, zona pellucida binding) [ Homo sapiens ]
<b>Official Symbol</b>	SPAM1
<b>Synonyms</b>	SPAM1; HYA1; PH20; HYAL1; HYAL3; HYAL5; PH-20; SPAG15; MGC26532; hyaluronidase PH-20; hyal-PH20; OTTHUMP00000211901; OTTHUMP00000211902; OTTHUMP00000211952; sperm surface protein PH-20; hyaluronoglucosaminidase PH-20
<b>Gene ID</b>	6677
<b>mRNA Refseq</b>	NM_001174044
<b>Protein Refseq</b>	NP_001167515
<b>MIM</b>	600930
<b>UniProt ID</b>	P38567

 Tel: 1-631-559-9269 1-516-512-3133

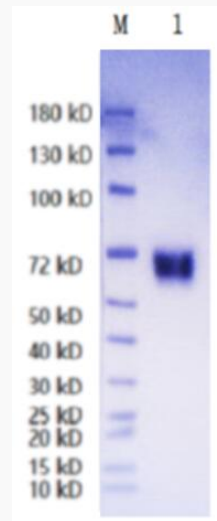
 Email: [info@creative-biomart.com](mailto:info@creative-biomart.com)  Fax: 1-631-938-8127

 45-1 Ramsey Road, Shirley, NY 11967, USA

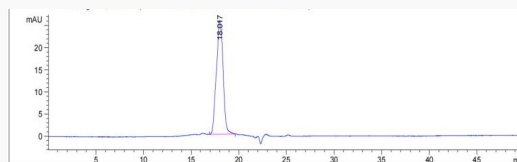
**SDS-PAGE**



**WB**



**HPLC**



 Tel: 1-631-559-9269 1-516-512-3133

 Email: [info@creative-biomart.com](mailto:info@creative-biomart.com)  Fax: 1-631-938-8127

 45-1 Ramsey Road, Shirley, NY 11967, USA