

# Recombinant Human SPARCL1 Protein, Myc/DDK-tagged, C13 and N15-labeled

**Cat. No.** SPARCL1-2466H    **Lot. No.** (See product label)

## SPECIFICATION

### Product Overview

SPARCL1 MS Standard C13 and N15-labeled recombinant protein (NP\_004675) with a C-terminal MYC/DDK tag, was expressed in HEK293 cells.

### Species

Human

### Source

HEK293

### Description

SPARCL1 (SPARC Like 1) is a Protein Coding gene. Diseases associated with SPARCL1 include Entropion. Gene Ontology (GO) annotations related to this gene include calcium ion binding. An important paralog of this gene is SPARC.

### Molecular Mass

75.2 kDa

### AA Sequence

MKTGLFFLCLLGTAAAIPTNARLLSDHSKPTAETVAPDNTAIPSLRAEDEENEKETAV  
 STEDDSHHKAEKSSVLKSKEESHEQSAEQGKSSSQELGLKDQEDSDGDLSVNLEY  
 APTEGTLDIKEDMSEPQEKKLENTDFLAPGVSSFTDSNQQESITKREENQEQRNY  
 SHHQLNRSSKHSQGLRDQGNQE QDPNISNGEEEEKEPGEVGT HNDNQERKTELP  
 REHANSKQEEDNTQSDDILEESDQPTQVSKMQEDEFDQGNQE QEDNSNAEMEEE  
 NASNVNKHIQETEWQSQEGKTGLEAISNHKETE EKT VSEALLMEPTDDGNTTPRNH  
 GVDDDGDGDDGDDGGTDGPRHSASDDYFIPSQAFLEAERAQSIAYHLKIEEQREKVH  
 ENENIGTTEPGEHQEAKKAENSSNEEETSSEGNMRVHAVDSCMSFQCKRGHICKA  
 DQQGKPHCVCQDPVTCPTKPLDQVCGTDNQTYASSCHLFATKCRLEGTKKGHQL  
 QLDYFGACKSIPTCTDFEVIQFPLRMRDWLKNILMQLYEANSEHAGYLNEKQRNKVK

 Tel: 1-631-559-9269    1-516-512-3133

 Email: [info@creative-biomart.com](mailto:info@creative-biomart.com)     Fax: 1-631-938-8127

 45-1 Ramsey Road, Shirley, NY 11967, USA

KIYLDEKRLLAGDHPIDLLLRDFKKNYHMYVYPVHWQFSELDQHPMDRVLTHSELAP  
 LRASLVPMEHCITRFFEECDPNKDKHITLKEWGHCFGIKKEEDIDENLLFTRTRPLEQK  
 LISEEDLAANDILDYKDDDDKV

**Purity** > 80% as determined by SDS-PAGE and Coomassie blue staining

**Stability** Stable for 3 months from receipt of products under proper storage and handling conditions.

**Storage** Store at -80 centigrade. Avoid repeated freeze-thaw cycles.

**Concentration** 50 µg/mL as determined by BCA

**Storage Buffer** 100 mM glycine, 25 mM Tris-HCl, pH 7.3.

## GENE INFORMATION

**Gene Name** SPARCL1 SPARC like 1 [ Homo sapiens (human) ]

**Official Symbol** SPARCL1

**Synonyms** SPARCL1; SPARC-like 1 (hevin); SPARC like 1 (mast9, hevin); SPARC-like protein 1; MAST9; hevin; mast9; MAST 9; SPARC-like 1 (mast9, hevin); high endothelial venule protein; proliferation-inducing protein 33; SC1; PIG33;

**Gene ID** 8404

**mRNA Refseq** NM\_004684

**Protein Refseq** NP\_004675

 Tel: 1-631-559-9269 1-516-512-3133

 Email: [info@creative-biomart.com](mailto:info@creative-biomart.com)  Fax: 1-631-938-8127

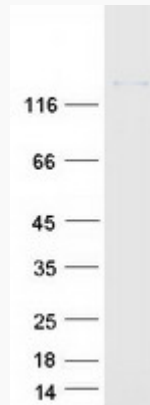
 45-1 Ramsey Road, Shirley, NY 11967, USA



MIM 606041

UniProt ID Q14515

SDS-PAGE



Tel: 1-631-559-9269 1-516-512-3133

Email: [info@creative-biomart.com](mailto:info@creative-biomart.com) Fax: 1-631-938-8127

45-1 Ramsey Road, Shirley, NY 11967, USA