

## Recombinant Rat SPARCL1 protein, His-SUMO-tagged

Cat. No. SPARCL1-3320R Lot. No. (See product label)

### SPECIFICATION

<b>Product Overview</b>	Recombinant Rat SPARCL1 protein(Ser402~Asp627), fused with Two N-terminal Tags, His-tag and SUMO-tag, was expressed in E.coli.
<b>Species</b>	Rat
<b>Source</b>	E.coli
<b>ProteinLength</b>	Ser402~Asp627
<b>Form</b>	PBS, pH7.4, containing 0.01% SKL, 1mM DTT, 5% Trehalose and Proclin300.
<b>Molecular Mass</b>	23kDa
<b>Endotoxin</b>	<1.0EU per 1g (determined by the LAL method)
<b>Purity</b>	> 95%
<b>Storage</b>	Avoid repeated freeze/thaw cycles. Store at 2-8°C for one month. Aliquot and store at -80°C for 12 months.
<b>Reconstitution</b>	Reconstitute in 10mM PBS (pH7.4) to a concentration of 0.1-1.0 mg/mL. Do not vortex.

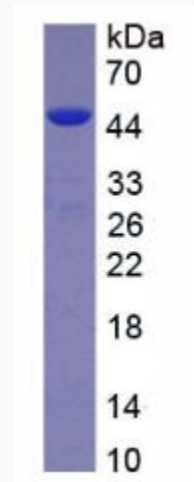
### GENE INFORMATION

 Tel: 1-631-559-9269 1-516-512-3133

 Email: [info@creative-biomart.com](mailto:info@creative-biomart.com)  Fax: 1-631-938-8127

 45-1 Ramsey Road, Shirley, NY 11967, USA

<b>Gene Name</b>	Sparcl1 SPARC-like 1 (hevin) [ <i>Rattus norvegicus</i> ]
<b>Official Symbol</b>	SPARCL1
<b>Synonyms</b>	SPARCL1; SPARC-like 1 (hevin); SPARC-like protein 1; matrix glycoprotein Sc1; SPARC-like 1 (mast9, hevin); Extracellular matrix protein 2; Sc1; Ecm2;
<b>Gene ID</b>	25434
<b>mRNA Refseq</b>	NM_012946
<b>Protein Refseq</b>	NP_037078

**SDS-PAGE**


 Tel: 1-631-559-9269 1-516-512-3133

 Email: [info@creative-biomart.com](mailto:info@creative-biomart.com)  Fax: 1-631-938-8127

 45-1 Ramsey Road, Shirley, NY 11967, USA