

# Recombinant Full Length Human SPAST Protein, C-Flag-tagged

Cat. No. SPAST-369HFL Lot. No. (See product label)

## SPECIFICATION

### Product Overview

Recombinant Full Length Human SPAST Protein, fused to Flag-tag at C-terminus, was expressed in Mammalian cells.

### Species

Human

### Source

Mammalian Cells

### Description

This gene encodes a member of the AAA (ATPases associated with a variety of cellular activities) protein family. Members of this protein family share an ATPase domain and have roles in diverse cellular processes including membrane trafficking, intracellular motility, organelle biogenesis, protein folding, and proteolysis. The use of alternative translational initiation sites in this gene results in a single transcript variant that can produce isoforms that differ in the length of their N-terminus and which thereby differ in the efficiency of their export from the nucleus to the cytoplasm. In addition, alternative splicing results in multiple transcript variants that encode isoforms that differ in other protein regions as well. One isoform of this gene has been shown to be a microtubule-severing enzyme that regulates microtubule abundance, mobility, and plus-end distribution. Mutations in this gene cause the most frequent form of autosomal dominant spastic paraplegia 4.

### Form

25 mM Tris HCl, pH 7.3, 100 mM glycine, 10% glycerol.

### Molecular Mass

67 kDa

 Tel: 1-631-559-9269 1-516-512-3133

 Email: [info@creative-biomart.com](mailto:info@creative-biomart.com)  Fax: 1-631-938-8127

 45-1 Ramsey Road, Shirley, NY 11967, USA

**AA Sequence**

MNSPGGRGKKKGGSGGASNPVPPRPPPPCLAPAPPAAGPAPPPEQHKRNLYYFSY  
 PLFVGFALLRLVAFH LGLLFVWLCQRFSRALMAAKRSSGAAPAPASASAPVPGG  
 EAERVRFVHKQAFEYISIALRIDEDEKAG QKEQAVEWYKKGIEELEKGIIVITGQGE  
 QCERARRLQAKMMTNLVMADRLQLLEKMQPVLFPFSKSQTD VYNDSTNLACRNG  
 HLQSESGAVPKRKDPLTHTSNLPRSKTVMKTGSAGLSGHHRAPSYSGLSMVSGV  
 KQ GSGPAPTTHKGTPTNRTNKPSTPTTATRKKKDLKNFRNVDSNLANLIMNEIVD  
 NGTAVKFDDIAGQDLA KQALQEIVILPSLRPELFTGLRAPARGLLLFGPPGNGKTM  
 AKAVAAESNATFFNISAASLTSKYVGEKE KLVRALFAVARELQPSIIFIDEVDSLLCER  
 REGEHDASRRLKTEFLIEFDGVQSAGDDRVLVMGATNRPQ ELDEAVLRRFIKRVYV  
 SLPNEETRLLLKLLCKQGSPLTQKELARMTDGYSGSDLTALAKDAALGP  
 IRELKPEQVKNMSASEMRNIRLSDFTESLKKIKRSVSPQTLEAYIRWNKDFGDTTVTR  
 TRPLEQKLISEEDLAANDILDYKDDDDKV

<b>Purity</b>	> 80% as determined by SDS-PAGE and Coomassie blue staining.
<b>Stability</b>	Stable for 12 months from the date of receipt of the product under proper storage and handling conditions. Avoid repeated freeze-thaw cycles.
<b>Storage</b>	Store at -80 centigrade.
<b>Concentration</b>	>50 ug/mL as determined by microplate BCA method.
<b>Preparation</b>	Recombinant protein was captured through anti-DDK affinity column followed by conventional chromatography steps.
<b>Protein Families</b>	Druggable Genome, Transmembrane
<b>Full Length</b>	Full L.

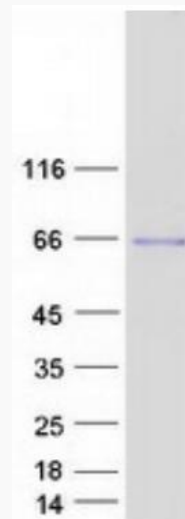
## GENE INFORMATION

 Tel: 1-631-559-9269 1-516-512-3133

 Email: [info@creative-biomart.com](mailto:info@creative-biomart.com)  Fax: 1-631-938-8127

 45-1 Ramsey Road, Shirley, NY 11967, USA

<b>Gene Name</b>	SPAST spastin [ Homo sapiens (human) ]
<b>Official Symbol</b>	SPAST
<b>Synonyms</b>	FSP2; SPG4; ADPSP
<b>Gene ID</b>	6683
<b>mRNA Refseq</b>	NM_014946.4
<b>Protein Refseq</b>	NP_055761.2
<b>MIM</b>	604277
<b>UniProt ID</b>	Q9UBP0



Coomassie blue staining of purified SPAST protein.

 Tel: 1-631-559-9269 1-516-512-3133

 Email: [info@creative-biomart.com](mailto:info@creative-biomart.com)  Fax: 1-631-938-8127

 45-1 Ramsey Road, Shirley, NY 11967, USA