

Recombinant Human SPATA18 Protein, Myc/DDK-tagged, C13 and N15-labeled

Cat. No. SPATA18-650H Lot. No. (See product label)

SPECIFICATION

Product Overview	SPATA18 MS Standard C13 and N15-labeled recombinant protein (NP_660306) with a C-terminal MYC/DDK tag, was expressed in HEK293 cells.
Species	Human
Source	HEK293
Description	This gene encodes a p53-inducible protein that is able to induce lysosome-like organelles within mitochondria that eliminate oxidized mitochondrial proteins, thereby contributing to mitochondrial quality control. Dysregulation of mitochondrial quality control is associated with cancer and degenerative diseases. The encoded protein mediates accumulation of the lysosome-like mitochondrial organelles through interaction with B cell lymphoma 2 interacting protein 3 and B cell lymphoma 2 interacting protein 3 like at the outer mitochondrial membrane, which allows translocation of lysosomal proteins to the mitochondrial matrix from the cytosol. Alternative splicing results in multiple transcript variants.
Molecular Mass	61.1 kDa
AA Sequence	MAENLKRLVSNETLRTLQEKLDFWLKEYNTNTCDQNLNHCLELIEQVAKVQGQLFGI LTAAAQEGGRNDGVETIKSRLLPWLEASFTAASLGKSVDSKVPSLQDTFDRERHKD PSPRDRDMQQLDSNLNSTRSQCNQVQDDLVEKTEKNLEESKNRSAISLLAAEEEEINQ LKKQLKSLQAQEDARHRNTDQRSSENRRSEPWSLEERKREQWNSLQKQADQQDT

 Tel: 1-631-559-9269 1-516-512-3133

 Email: info@creative-biomart.com  Fax: 1-631-938-8127

 45-1 Ramsey Road, Shirley, NY 11967, USA

EAMSDYKKQLRNLKEEIAVLSAEKSALQGRSSRSRSPSPAPRSRSCSRSRSPST
 AVKVRRPSPNRSKLSNVARKAALLSRFSDSYSQARLDAQCLLRRCIDKAETVQRIIYI
 ATVEAFHVAKMAFRHFHFKIHVRKSLTPSYVGSNDFENAVLDYVICHLDLYDSQSSVND
 VIRAMNVNPKISFPPVDFCLLSDFIQEICCIAFAMQALEPPLDIAYGADGEVFNDCKY
 RRSYDSDFTAPLVLYHVWPALMENDCVIMKGEAVTRRGAFWNSVRSVSRCSRSL
 SPICPRSQIGLNTMSRSRSPSPIRCGLPRFTRTRPLEQKLISEEDLAANDILDYKDDD
 DKV

Purity > 80% as determined by SDS-PAGE and Coomassie blue staining

Stability Stable for 3 months from receipt of products under proper storage and handling conditions.

Storage Store at -80 centigrade. Avoid repeated freeze-thaw cycles.

Concentration 50 µg/mL as determined by BCA

Storage Buffer 100 mM glycine, 25 mM Tris-HCl, pH 7.3.

GENE INFORMATION

Gene Name SPATA18 spermatogenesis associated 18 [Homo sapiens (human)]

Official Symbol SPATA18

Synonyms SPATA18; spermatogenesis associated 18; Mieap; SPETEX1; mitochondria-eating protein; spermatogenesis associated 18 homolog; testis tissue sperm-binding protein Li 71n

Gene ID 132671

 Tel: 1-631-559-9269 1-516-512-3133

 Email: info@creative-biomart.com  Fax: 1-631-938-8127

 45-1 Ramsey Road, Shirley, NY 11967, USA

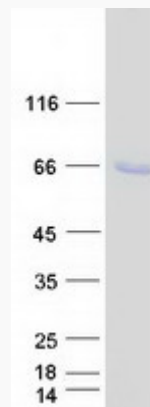
mRNA Refseq [NM_145263](#)

Protein Refseq [NP_660306](#)

MIM [612814](#)

UniProt ID [Q8TC71](#)

SDS-PAGE



 Tel: 1-631-559-9269 1-516-512-3133

 Email: info@creative-biomart.com  Fax: 1-631-938-8127

 45-1 Ramsey Road, Shirley, NY 11967, USA