

Recombinant Human SPATA20 Protein, Myc/DDK-tagged, C13 and N15-labeled

Cat. No. SPATA20-6597H **Lot. No.** (See product label)

SPECIFICATION

Product Overview	SPATA20 MS Standard C13 and N15-labeled recombinant protein (NP_073738) with a C-terminal MYC/DDK tag, was expressed in HEK293 cells.
Species	Human
Source	HEK293
Description	SPATA20 (Spermatogenesis Associated 20) is a Protein Coding gene. Diseases associated with SPATA20 include Common Bile Duct Disease and Choledocholithiasis.
Molecular Mass	89.8 kDa
AA Sequence	MLGARAWLGRVLLLPRAGAGLAASRRCPGVWPRTWPHRSPSRGSSSRDKDRSAT VSSSVMPAGGKGSHPSSTPQRPVNRLIHEKSPYLLQHAYNPVDWYPWGQEA FDK ARKENKPIFLSVGYSTCHWCHMMEESFQNEEIGRLLSEDFVSVKVDREERPDV DK VYMTFVQATSSGGGWPMNVWLTPNLQPFVGGTYFPPEDGLTRVGFRTVLLR IREQ WKQNKNTLLENSQRVTTALLARSEISVGDRQLPPSAATVNNRCFQQLDE GYDEEYGF AEAPKFPTPVILSFLFSYWLSHRLTQDGSRAQQMALHTLKMMANG GIRDHVGQGFHRYSTDRQWHVPHFEKMLYDQAQLAVAYSQAFQLSGDEFYS DVAKGILQYVARSLSHRSGGFYSAEDADSPPERGQRPKEGAYYVWTVKEVQQL LPEPVLGATEPLTSGQLLMKH YGLTEAGNISPSQDPKQELQGQNVLTVRYSLELTAARFGLDVEAVRLLNSG LEKLFQARKHRPKPHLDSKMLAAWNGLMVSGYAVTGAVLGQDRLINYATNGAKFLK

 Tel: 1-631-559-9269 1-516-512-3133

 Email: info@creative-biomart.com  Fax: 1-631-938-8127

 45-1 Ramsey Road, Shirley, NY 11967, USA

RHMFVDV ASGR LMRTCYTGPGGTVEHSNPPCWGFLEDYAFVVRGLLDLYEASQESA
 WLEWALRLQDTQDKLFWDSQGGGYFCSEAE LGAGLPLRLKDDQDGAEPSANSVS
 AHNLLRLHGFTGHKDWMDKCVCLLTAFSERMRRVPVALPEMVRALSAQQQTLKQIV
 ICGDRQAKDTKALVQCVHSVYIPNKVLILADGDPSSFLSRQLPFLSTLRRLEDQATAY
 VCENQACSVITDPCELRKLLHPTRTRPLEQKLISEEDLAANDILDYKDDDDKV

Purity > 80% as determined by SDS-PAGE and Coomassie blue staining

Stability Stable for 3 months from receipt of products under proper storage and handling conditions.

Storage Store at -80 centigrade. Avoid repeated freeze-thaw cycles.

Concentration 50 µg/mL as determined by BCA

Storage Buffer 100 mM glycine, 25 mM Tris-HCl, pH 7.3.

GENE INFORMATION

Gene Name [SPATA20 spermatogenesis associated 20 \[Homo sapiens \(human\) \]](#)

Official Symbol [SPATA20](#)

Synonyms SPATA20; spermatogenesis associated 20; SSP411; Tisp78; HEL-S-98; spermatogenesis-associated protein 20; epididymis secretory protein Li 98; sperm protein SSP411; sperm-specific protein 411; transcript increased in spermiogenesis 78

Gene ID [64847](#)

mRNA Refseq [NM_022827](#)

 Tel: 1-631-559-9269 1-516-512-3133

 Email: info@creative-biomart.com  Fax: 1-631-938-8127

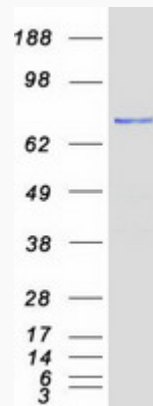
 45-1 Ramsey Road, Shirley, NY 11967, USA

Protein Refseq NP_073738

MIM 613939

UniProt ID Q8TB22

SDS-PAGE



 Tel: 1-631-559-9269 1-516-512-3133

 Email: info@creative-biomart.com  Fax: 1-631-938-8127

 45-1 Ramsey Road, Shirley, NY 11967, USA