

Recombinant Human SPATA7 Protein, Myc/DDK-tagged, C13 and N15-labeled

Cat. No. SPATA7-1616H **Lot. No.** (See product label)

SPECIFICATION

Product Overview

SPATA7 MS Standard C13 and N15-labeled recombinant protein (NP_001035518) with a C-terminal MYC/DDK tag, was expressed in HEK293 cells.

Species

Human

Source

HEK293

Description

This gene, originally isolated from testis, is also expressed in retina. Mutations in this gene are associated with Leber congenital amaurosis and juvenile retinitis pigmentosa. Alternatively spliced transcript variants encoding different isoforms have been found for this gene.

Molecular Mass

64.2 kDa

AA Sequence

MDGSRRVRATSVLPRYGPPCLFKGHLSTKSNAAVDCSVPVSVSTSIKYADQQRREK
 LKKELAQCEKEFKLTKTAMRANYKNNSKSLFNTLQKPSGEPQIEDDMLKEEMNGFS
 SFARSLVPSSERLHLSLHKSSKVITNGPEKNSSSSPSSVDYAASGPRKLSSGALYGR
 RPRSTFPNSHRFQLVISKAPSGDLLDKHSELF SNKQLPFTPRTLKTEAKSFLSQYRY
 YTPAKRKKDFTDQRIEAEQTELSFKSELGTAETKNMTDSEMNIKQASNCVTYDAKE
 KIAPLPLEGHDSTWDEIKDDALQHSSPRAMCQYSLKPPSTRKIYSDEEELLYLSFIED
 VTDEILKLGLFSNRFLERLFRERHIKQNKHLEEEKMRHLLHVLKVDLGTSEENSVKQN
 DVDMLNVDFEKGAGNSEPNELKNESEVTIQQERQQYQKALDMLLSAPKDENEIFPS
 PTEFFMPIYKSKHSEGVIIQQVNDETNLETSTLDENHPSISDSLTDRETSVNVIEGDSD

 Tel: 1-631-559-9269 1-516-512-3133

 Email: info@creative-biomart.com  Fax: 1-631-938-8127

 45-1 Ramsey Road, Shirley, NY 11967, USA

PEKVEISNGLCGLNTSPSQSVQFSSVKGDNNHDMELSTLKIMEMSIEDCPLDVTRTR
PLEQKLISEEDLAANDILDYKDDDDKV

Purity > 80% as determined by SDS-PAGE and Coomassie blue staining

Stability Stable for 3 months from receipt of products under proper storage and handling conditions.

Storage Store at -80 centigrade. Avoid repeated freeze-thaw cycles.

Concentration 50 µg/mL as determined by BCA

Storage Buffer 100 mM glycine, 25 mM Tris-HCl, pH 7.3.

GENE INFORMATION

Gene Name [SPATA7 spermatogenesis associated 7 \[Homo sapiens \(human\) \]](#)

Official Symbol [SPATA7](#)

Synonyms SPATA7; spermatogenesis associated 7; HSD3; LCA3; HSD-3.1; HEL-S-296; spermatogenesis-associated protein 7; epididymis secretory protein Li 296; epididymis secretory sperm binding protein; spermatogenesis-associated protein HSD3

Gene ID [55812](#)

mRNA Refseq [NM_001040428](#)

Protein Refseq [NP_001035518](#)

 Tel: 1-631-559-9269 1-516-512-3133

 Email: info@creative-biomart.com  Fax: 1-631-938-8127

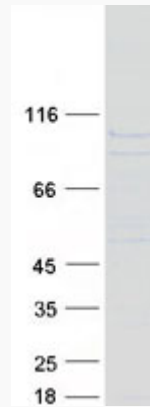
 45-1 Ramsey Road, Shirley, NY 11967, USA



MIM 609868

UniProt ID Q9P0W8

SDS-PAGE



Tel: 1-631-559-9269 1-516-512-3133

Email: info@creative-biomart.com Fax: 1-631-938-8127

45-1 Ramsey Road, Shirley, NY 11967, USA