

Recombinant Human SPC24 Protein, Myc/DDK-tagged, C13 and N15-labeled

Cat. No. SPC24-5620H Lot. No. (See product label)

SPECIFICATION

Product Overview	SPC24 MS Standard C13 and N15-labeled recombinant protein (NP_872319) with a C-terminal MYC/DDK tag, was expressed in HEK293 cells.
Species	Human
Source	HEK293
Description	SPC24 (SPC24 Component Of NDC80 Kinetochore Complex) is a Protein Coding gene. Among its related pathways are Signaling by GPCR and Mitotic Prometaphase.
Molecular Mass	22.4 kDa
AA Sequence	MAAFRDIEEVSQGLLSLLGANRAEAQQRRLLGRHEQVVERLLETQDGAEKQLREILT MEKEVAQSQLLNAKEQVHQGGVELQQLLEAGLQEAGEEDTRLKASLLQLTRELEELKEI EADLERQEKEVDEDTTITIPSAVYVAQLYHQVSKIEWDYECEPGMVKGIHHGPSVA QPIHLDSTQLSRKFISDYLWLSLVDTEWTRTRPLEQKLISEEDLAANDILDYKDDDDKV
Purity	> 80% as determined by SDS-PAGE and Coomassie blue staining
Stability	Stable for 3 months from receipt of products under proper storage and handling conditions.
Storage	Store at -80 centigrade. Avoid repeated freeze-thaw cycles.

 Tel: 1-631-559-9269 1-516-512-3133

 Email: info@creative-biomart.com  Fax: 1-631-938-8127

 45-1 Ramsey Road, Shirley, NY 11967, USA

Concentration 50 µg/mL as determined by BCA

Storage Buffer 100 mM glycine, 25 mM Tris-HCl, pH 7.3.

GENE INFORMATION

Gene Name [SPC24](#) SPC24 component of NDC80 kinetochore complex [Homo sapiens (human)]

Official Symbol [SPC24](#)

Synonyms SPC24; SPC24 component of NDC80 kinetochore complex; SPBC24; kinetochore protein Spc24; SPC24, NDC80 kinetochore complex component, homolog; hSpc24; spindle pole body component 24 homolog

Gene ID [147841](#)

mRNA Refseq [NM_182513](#)

Protein Refseq [NP_872319](#)

MIM [609394](#)

UniProt ID [Q8NBT2](#)

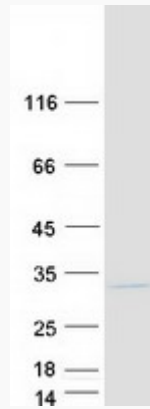
 Tel: 1-631-559-9269 1-516-512-3133

 Email: info@creative-biomart.com  Fax: 1-631-938-8127

 45-1 Ramsey Road, Shirley, NY 11967, USA



SDS-PAGE



Tel: 1-631-559-9269 1-516-512-3133

Email: info@creative-biomart.com Fax: 1-631-938-8127

45-1 Ramsey Road, Shirley, NY 11967, USA