

# Recombinant Human SPCS2 Protein, Myc/DDK-tagged, C13 and N15-labeled

Cat. No. SPCS2-4411H Lot. No. (See product label)

## SPECIFICATION

<b>Product Overview</b>	SPCS2 MS Standard C13 and N15-labeled recombinant protein (NP_055567) with a C-terminal MYC/DDK tag, was expressed in HEK293 cells.
<b>Species</b>	Human
<b>Source</b>	HEK293
<b>Description</b>	Component of the microsomal signal peptidase complex which removes signal peptides from nascent proteins as they are translocated into the lumen of the endoplasmic reticulum.
<b>Molecular Mass</b>	25 kDa
<b>AA Sequence</b>	MAAAAVQGGRSGGSGGCSGAGGASNCGTGSGRSGLLDKWKIDDKPKIDKWDGS AVKNSLDDSAKKVLEKYKYVENFGLIDGRLTICTISCFFAIVALIWDYMHPPESKPV LALCVISYFVMMGILTIYTSYKEKSIFLVAHRKDPTGMDPDDIWQLSSSLKRFDKYL KLTFISGRTKQQREAEFTKSIKFFDHSGTLVMDAYEPEISRLHDSLAIERKIKTRTRP LEQKLISEEDLAANDILDYKDDDDKV
<b>Purity</b>	> 80% as determined by SDS-PAGE and Coomassie blue staining
<b>Stability</b>	Stable for 3 months from receipt of products under proper storage and handling conditions.

 Tel: 1-631-559-9269 1-516-512-3133

 Email: [info@creative-biomart.com](mailto:info@creative-biomart.com)  Fax: 1-631-938-8127

 45-1 Ramsey Road, Shirley, NY 11967, USA

<b>Storage</b>	Store at -80 centigrade. Avoid repeated freeze-thaw cycles.
<b>Concentration</b>	50 µg/mL as determined by BCA
<b>Storage Buffer</b>	100 mM glycine, 25 mM Tris-HCl, pH 7.3.

## GENE INFORMATION

<b>Gene Name</b>	SPCS2 signal peptidase complex subunit 2 [ Homo sapiens (human) ]
<b>Official Symbol</b>	SPCS2
<b>Synonyms</b>	SPCS2; signal peptidase complex subunit 2; signal peptidase complex subunit 2; SPase 25 kDa subunit; microsomal signal peptidase 25 kDa subunit; signal peptidase 25kDa subunit; signal peptidase complex subunit 2 homolog; EC 3.4.-.-
<b>Gene ID</b>	9789
<b>mRNA Refseq</b>	NM_014752
<b>Protein Refseq</b>	NP_055567
<b>UniProt ID</b>	Q15005

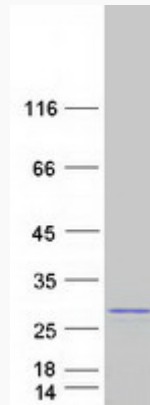
 Tel: 1-631-559-9269 1-516-512-3133

 Email: [info@creative-biomart.com](mailto:info@creative-biomart.com)  Fax: 1-631-938-8127

 45-1 Ramsey Road, Shirley, NY 11967, USA



SDS-PAGE



Tel: 1-631-559-9269 1-516-512-3133

Email: [info@creative-biomart.com](mailto:info@creative-biomart.com) Fax: 1-631-938-8127

45-1 Ramsey Road, Shirley, NY 11967, USA